



Food and Agriculture
Organization of the
United Nations

The FAO Global Record:

- The importance of the IMO number
- Possible role of the RFVR

SEAFDEC, 12-13 December 2018

Matthew Camilleri, PhD

Head

Fishing Operations and Technology Branch



THE
Global Record
of Fishing Vessels, Refrigerated
Transport Vessels and Supply Vessels



Contents

Concept

UVI

State of affairs

Public version

Data sharing mechanisms

Connecting to regional registers

Links to PSMA



Concept





A global information system to fight IUU fishing through increased transparency and traceability

➤ 'Single access point' for vessel and vessel-related info

used for

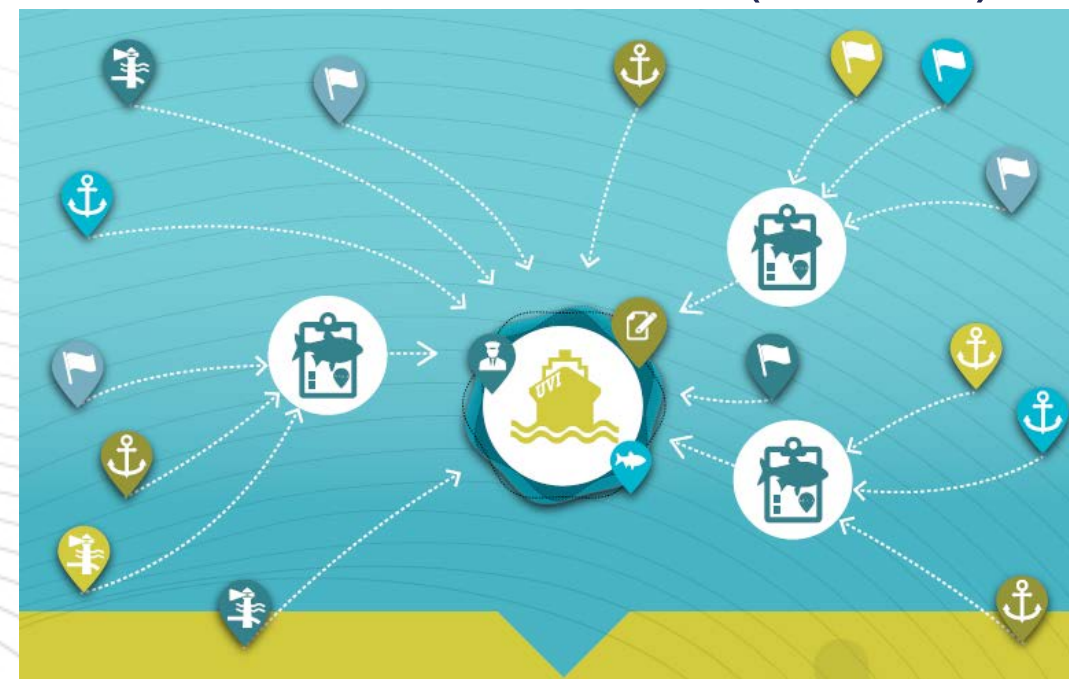
- Verification of information (FS, PS, CS, MS)
- Risk assessment (PS, CS, MS)
- Public dissemination of information (consumers, industry...)



➤ Certified, relevant & up-to-date information from official sources (States)

➤ Fishing vessels + transport + supply

➤ More than a list of authorized vessels





➤ The Five Required Fields (Vessel Details)



Unique Vessel Identifier

1. Unique Vessel Identifier or UVI (IMO number)
2. Current flag
3. Vessel name
4. Length overall (LOA)
5. Either Gross Tonnage (GR) or Gross Registered Tonnage (GRT)

➤ Information modules (101 data fields)

- Vessel details (52 fields)
- Historical information (8 fields)
- Authorisations (13 fields)
- Inspections and surveillance (18 fields)
- Port entry denials (6 fields)
- IUU lists (4 fields)

➤ Phases

- Phase 1: 100 GT (or 24 m) and above
- Phase 2: between 50 and 100 GT (18-24 m)
- Phase 3: between 10 and 50 GT (12-18 m)



THE
Global Record
of Fishing Vessels, Refrigerated
Transport Vessels and Supply Vessels



IMO

SAFETY, POLLUTION, SECURITY

FAO

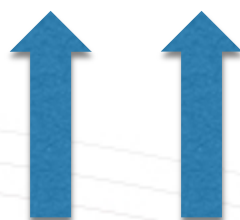
IUU FISHING

GISIS

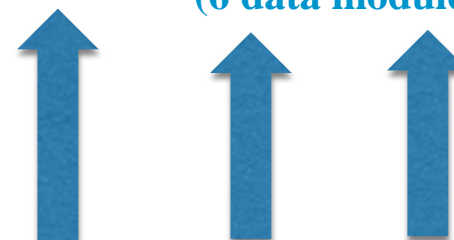
Global Integrated Shipping Information System
(34 data modules)

Global Record

Of Fishing Vessels, Refrigerated Transport Vessels
and Supply Vessels
(6 data modules)



IHS

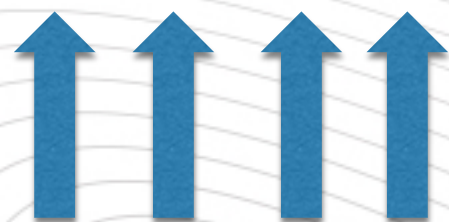


MOUs

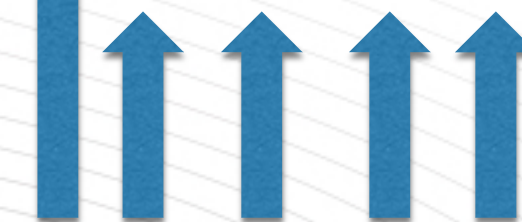
Paris, Tokyo, Viña del Mar...

RFBs

NEAFC, IOTC, ICCAT...
SEAFDEC?



States



States





UVI





➤ Key component: UVI – Unique Vessel Identifier



Unique Vessel Identifier

- IMO number for >100 GT or >24m LOA (**COFI 32**)
- 2017 **IMO Resolution A.1117(30)** to include all fishing vessels of 12 m and above that are authorized to operate in waters outside national jurisdiction and vessels above 24 m of wooden hull
- Stays with the vessel despite changes of flag, name, ownership, etc. Numbers are not reassigned, even after sinking or decommission
- Linkage of information modules, systems and instruments
- Traceability of fish products
- ~ 23 000 fishing vessels
- Free



THE Global Record

of Fishing Vessels, Refrigerated Transport Vessels and Supply Vessels



E

ASSEMBLY
30th session
Agenda item 9

A 30/Res.1117
18 December 2017
Original: ENGLISH

Resolution A.1117(30)

Adopted on 6 December 2017
(Agenda item 9)

IMO SHIP IDENTIFICATION NUMBER SCHEME

Application

The Scheme applies to ships of 100 gross tonnage and above, including **fishing vessels of steel and non-steel hull construction**; passenger ships of less than 100 gross tonnage, high-speed passenger craft and mobile offshore drilling units engaged on international voyages (SOLAS regulation V/19-1); **and to all motorized inboard fishing vessels of less than 100 gross tonnage down to a size limit of 12 metres in length overall (LOA) authorized to operate outside waters under the national jurisdiction of the flag State,**

<http://imonumbers.ihs.com>



REQUEST FOR IMO SHIP IDENTIFICATION NUMBER

IHS Maritime & Trade
Sentinel House, 163 Brighton Road
Coulston, Surrey CR5 2YH
United Kingdom
Tel: +44 01334 328300
Email: ship.imo@ihs.com

TO ENABLE UNIQUE IDENTIFICATION OF SHIPS FOR ASSIGNMENT OF AN IMO NUMBER IN ACCORDANCE WITH IMO RESOLUTION A.1075 (28), SOLAS XI 1/3 and 1/5, PLEASE COMPLETE THE FOLLOWING DETAILS IN CAPITALS:-

Note: Shipbuilding details are essential to issue an IMO Ship Number for Newbuildings prior to completion

Current Ship Name / Shipyard ID*			
Former Name(s)			
Original Name*			
Flag*	Port of Registry†	Call Sign†	
MMSI†	Official Number†	Flag Registration Date†	
Tonnage (68)	<input type="checkbox"/> Yes <input type="checkbox"/> No	Fishing No. +	
Gross*		Net*	Deadweight
Length Overall*		Length B.P.	Beam*
Moulded Depth*		Draught	
Keel Laying Date†	Launch Date†	Completion Date*†	
Shipbuilder*		Shipbuilder Hull Number*	
Sub-Contractor Hull		Sub-Contractor Hull Number	
Place of Build*		Hull Material*	
Ship Type		Fishing Vessel Gear-type*	
MARPOL requirements for Oil Tankers:		The ship complies with regulation 13F(3) (double-hull)	<input type="checkbox"/> Yes <input type="checkbox"/> No
		The ship complies with regulations 13 and 13E (SBT/PL)	<input type="checkbox"/> Yes <input type="checkbox"/> No
		Other (please specify)	
		The ship is subject to CAS requirements of regulation	<input type="checkbox"/> Yes <input type="checkbox"/> No

Registered Owner† & Address† (Including Fax, Telephone & Email)	Manager† & Address† (Including Fax, Telephone, Email & Website)	
Number of Main Engines*	Manufacturer*	Engine Model*
Current Class Society*	kW of Each Engine	Number of Propellers

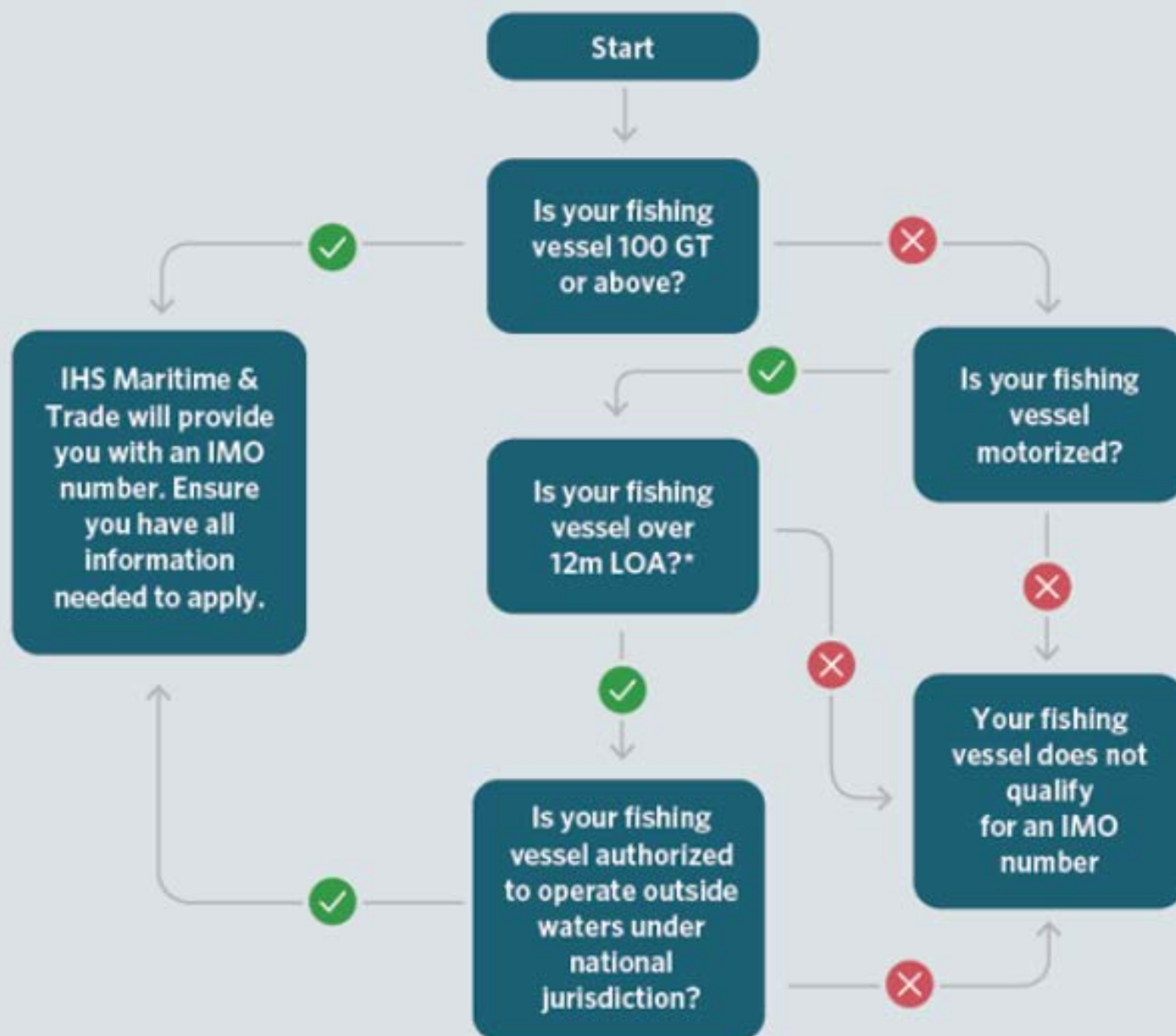
COMPANY REQUESTING IMO NUMBER	
Company Name*	
Contact Name*	Sender's Email*

[* Required Fields – all ships] [† Required Fields – Ships in service only] [* Required Fields – Fishing Vessels only]
[+ Distinctive Number / Letters for Fishing Vessels] [‡ Date format is YYYY-MM-DD]

Note: We cannot issue an IMO Ship No. without the above required fields



Is Your Vessel Eligible for an IMO Number?



State of affairs





State of affairs

- Since 2015 - 4 **Global Record Working Group** meetings and
 - 1 **Specialized Core Working Group** (GRCGs) meeting on
 - Data Requirements
 - Data Exchange
 - Third Parties
- Dec 2016 - **pilot version** with 11 countries
- 21 April 2017 - launch of **first working version** (countries access only)
 - Strong search functionalities
 - Visualization of individual vessels
 - Upload of data by countries
- Apr 2017 - New **website** in 6 languages
<http://www.fao.org/global-record/en/>
- Jan 2018 - Call for official designation of **National Focal Points (NFPs)**
- July 2018 - Launch of public version
- **5th GRWG - Republic of Korea in April 2019**





GRGW4 – London 11-13 April 2018

- Welcome increased **participation** → need to broaden submission prior to COFI 33
- **Strengthen involvement of RFMOs through linkages with Global Record & visibility**
- Need to align national **laws** and regulations (IMO number, interagency coordination)
- Focus on **vessel details**, as well as authorizations and history (verification, risk analysis)
- Need to broaden discussions on ISSCFV and ISSCFG, particularly for **non-fishing vessel** categories (States to take it up in RFMOs)
- Encourage the use of **automatic information exchange** mechanisms being implemented by the Global Record (improved frequency, quality, sustainability & simplification of processes)
- Reiterated the importance of a timely **release** to support PSMA implementation (verification)



Public version

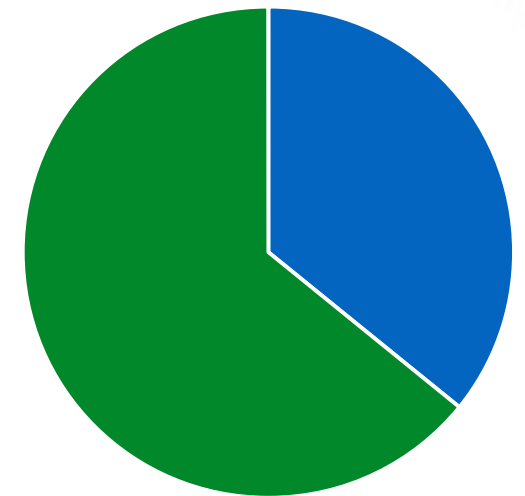




Totals countries & vessels

- 1/3 of global eligible fleet
- All sizes (even below 12 m LOA)
- Transport vessels and supply (around 1/3 of global fleet)
- Mainly vessel details, but not only
- Almost 1/3 of countries with fleets (North America, Latinamerica, Europe)

Eligible fishing fleet



■ Global Record fleet
■ Global fishing fleet with IMO numbers





Totals countries & vessels

Region	Number of Countries	Number of Vessels	% of Vessels	Average Length (m)	Total GT	Average GT
Africa	4	326	4	42.87	100,358	308
Asia	5	376	4	54.85	327,323	871
Europe	26	3,433	39	33.25	1,506,526	439
Latin America & Caribbean	11	1,016	12	56.24	1,299,778	1279
Near East	0	0	0	0	0	0
North America	2	3,495	40	27.28	453,580	130
Pacific	3	130	1	45.62	0	0
GLOBAL	52	8,776	100	45.24	3,694,100	420

- Asia region: Philippines, Republic of Korea, Indonesia, Thailand and Singapore.
(Sri Lanka have requested credentials)



(As of 06/12/2018)



Fisheries vs transport & supply vessels

- Transport vessels (transshipment) and supply: about 1/3 of the global fleet)

	Number
Fishing vessels	8,167
Transport and Supply vessels	240





Data sharing mechanisms





4 *Data sharing mechanisms*

Manual data submission mechanisms	Automated data submission mechanisms
Input through a web form	<i>Fisheries Language for Universal eXchange (FLUX)</i>
CSV File upload through website (currently in use)	<i>RFBs, IHSM data links</i>





Automatic data exchange (FLUX)

FLUX (Fisheries Language for Universal eXchange)

- **Data Standard** (format) used: XML Schema designed by UN/CEFACT (open to all UN Members). CSV and XML files can also be sent.
- **Transportation layer** over web services (open source, free)
 - providing an envelope that can contain a business message
 - and a software which serves as infrastructure to transport the envelopes
- **Customizable protocol** for data exchange

Status

- Fisheries domains available: Vessel Details and Authorizations (Compliance domain under development).
- Status: in use by Thailand, NEAFC & European countries;
Under consideration: Norway, Faroe Islands, Greenland, GFCM, ICCAT, NAFO, SEAFO, WCPFC...
- Implementation in Global Record foreseen for the first-second quarter of 2019.

FLUX in brief:

<http://www.fao.org/fi/static-media/MeetingDocuments/GlobalRecord/GRWG4/Inf12e.pdf>





Role of regional vessel registers





Connection from a Regional Vessel Register

1. One-time connection from a regional register to the Global Record

- Use a common language (FLUX – Fisheries Language for Universal eXchange, UN/CEFACT)
- Setup a physical connection through transportation layer (open source software)

2. Countries define data sharing protocol and validate exchange

- Define what information fields will be shared with GR through RVR
- Validate information exchange at a click within GR system
 - Eligible vessels automatically shared (minimum 5 required data fields)
 - ✓ IMO number, current flag, vessel name, length overall and GT / GRT
 - Live adjournment of information
 - ✓ Changes to relevant/eligible vessels in regional register automatically transferred

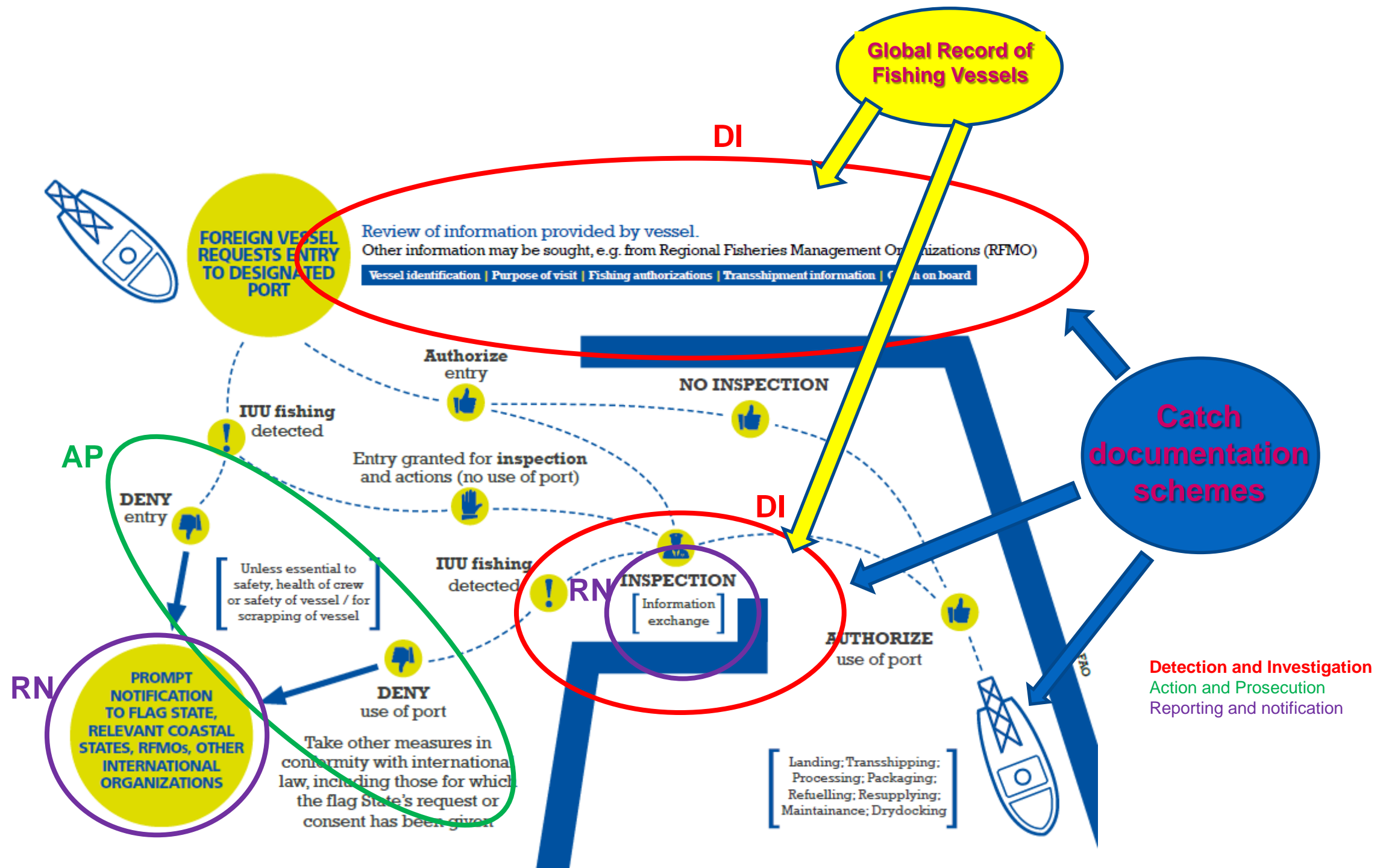




Links to PSMA



Overview of the PSMA requirements and operations





Support to PSMA implementation

- ✓ Linkage vessel & inspection information
- ✓ Verification of information & risk analysis
 - Vessel, historical & authorization details - Annex A (request of entry into port)
 - Historical details, compliance information
- ✓ Lessons learnt
 - Process: GRWG → PSMA TWG-IE
 - Standards, formats (Annex D)
 - Information exchange mechanism (FLUX)
- ✓ Possibly non-parties
- ✓ Other surveillance information (Coastal State)



Thank you

Contacts are welcome

Fishing Operations and Technology
Fisheries and Aquaculture Policy and Resources Division
Fisheries and Aquaculture Department
Food and Agriculture Organization of the United Nations (FAO)
Viale delle Terme di Caracalla
00153 Rome, Italy

FI-Global-Record@fao.org
www.fao.org/global-record

DONORS



MINISTERIO
DE AGRICULTURA, ALIMENTACIÓN
Y MEDIO AMBIENTE



MINISTRY OF INDUSTRIES
AND INNOVATION