

# **“Implementation of Monitoring Control and Surveillance (MCS) in Myanmar”**

**the Regional Workshop on Monitoring Control and  
Surveillance for Combating IUU Fishing in Southeast Asia”  
from 23-24 August 2022 in Thailand**

**23-8-2022**

# 1. MCS Implementation in Offshore Marine Fisheries



# Types of Marine Fishery in Myanmar



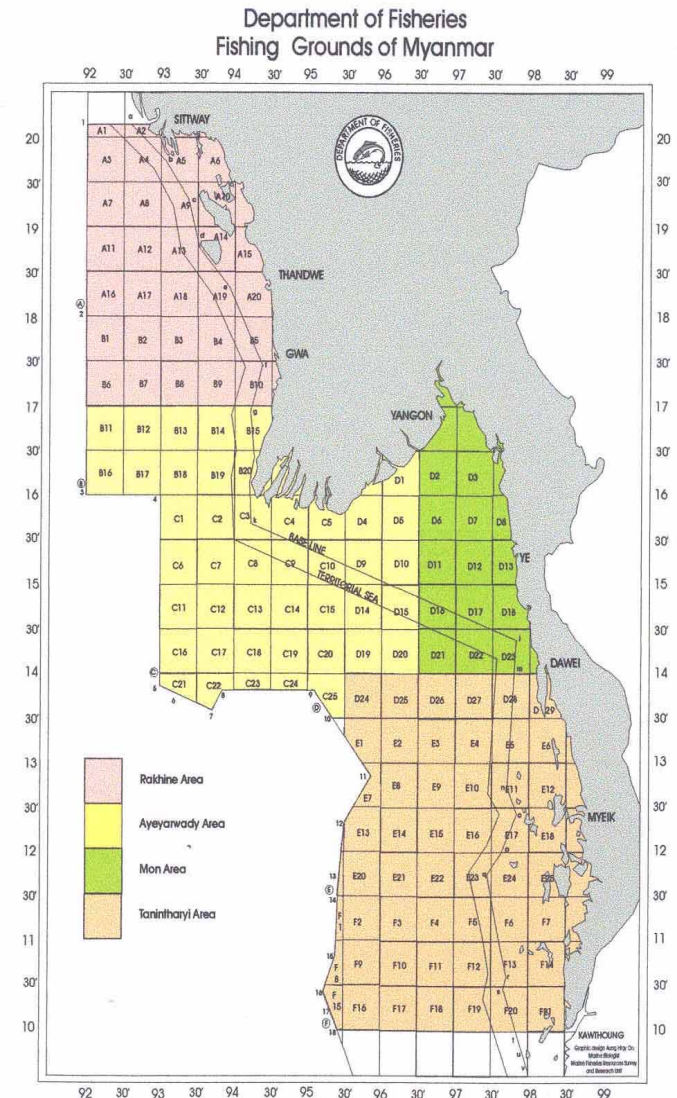
## a. In-shore Fishery

- 10 nautical mile from shore
- Not more 25 HP engine & 40 feet length of the boat.



## b. Off-shore Fishery

- Outer area of inshore to end of EEZ
- More than 25 HP engine & 40 feet length
- Bottom trawl, Purse seine, Surrounding net, Drift net, Squid net, Trap & Long line.



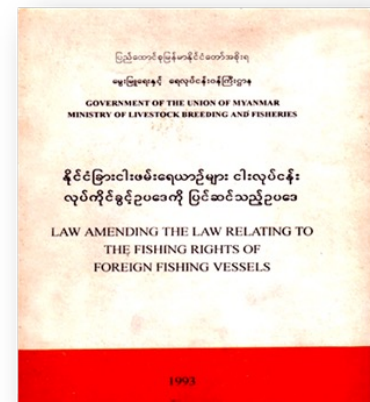
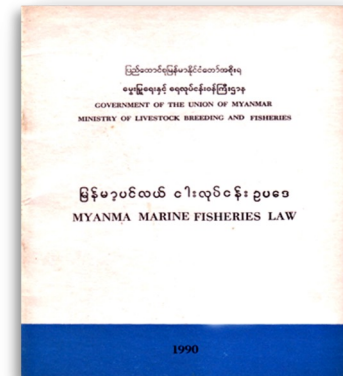
# Legal framework

- DOF manages the marine fishery in accordance with following Fishery Laws ;

- ✓ Law relating to the Fishing Rights of Foreign Fishing Vessels (Law No.11/89)
- ✓ Myanmar Marine Fisheries Law (Law No. 9/90)
- ✓ Law amending the law relating to the Fishing Rights of Foreign Fishing vessels (Law No.15/93)
- ✓ Law amending the Myanmar Marine Fisheries Law (Law No.16/93)

## New Fisheries Law under process

- Marine Fisheries Law ( Reform the Marine Fisheries Law 1990 and Law relating to the Fishing Rights of Foreign Fishing Vessels)





# MCS Measure for local vessel

- All vessel owner (Fishing or carrier)
  - shall have the vessel registration issued by Department of Marine Administration (DMA).
  - shall have the licence
  - shall appoint on board his vessel only those fishermen who are registered in the Department.
  - shall operate in the permitted fishing ground fishing day
  - shall comply with the regulations and directives prescribed by the Department.

# MCS Measure for foreign vessel

- For all fishing vessel, the company
  - shall apply prior permission of DoF to enter Myanma Marine waters.
  - shall use the vessel route which is permitted by DoF in prior permission.
  - shall operate in the permitted fishing ground.
  - shall be inspected in designated check points and shall land in designated landing site in Myanmar.
  - shall install the vessel monitoring system-VMS

# MCS component

- DoF transfer the inspection power to Custom Department and NAVY.
- NAVY has been conducting the vessel inspection at sea.
- All vessel have to be inspected in check point by one stop service included by DOF, DMA, Custom Department , Myanmar Police Force, Immigration, Myanmar Port Authority, Department of General Administration at shore.



# MCS Measure for Marine Offshore Fisheries

**1979 - September/October**  
**1980 - March/April**  
**2013 - November/December**  
**2015 – April/June**  
**2018- August/September**

Year	Pelagic Fish	Demarsal Fish	Total Biomass
1979-80	1.0 MT	0.75 MT	1.75 MT
2013-15	0.303 MT	0.647MT	0.95 MT

- Based on the results of the fisheries resources survey,
- Do not allowed the building and importing of new fishing vessels into Myanmar water
- Do not allow the fishing right of foreign fishing vessel
- Limitation of fishing gear mesh size, quantity and fishing day



2018 –Survey on Distribution of eggs and Larvae and Environmental factors , Close season and close area for all fishing from May to July in 2021 fishing season



# Vessel Marking System


Description	Place of Licence Issue	Word color on Line Color of Hull
Off Shore Fishing Vessel	Taninthayi	White
	HO/Ayeyarwaddy/Mon	White
	Rakhing	White
Off Shore Carrier	Local Carrier	Red
Foreign Fishing	Joint Venture	Red
	OTS (Long Line, Squid, Trap)	Red
	Fishing Right	White



# **Prohibition of fishing gear**


- Under "Law Relating To The Fishing Rights Of Foreign Fishing Vessels", "Myanmar Marine Fisheries Law" and related regulations, fishing gear that is destructive to the environment and the fisheries resources are banned.
- These gears includes pair trawl fishing, electric fishing, fishing using poisons, chemicals , explosives, Purse seine net less than 3.5 inch mesh size, for trawl net cod-end mesh size less than 2 inches.

# Prohibition of fishing Activities for Protected Fish species

 **Closed Area (3 months)**  
(Started from 1993-94, now in all fishing ground )

 **Grouper with eggs (2/2006)**  
All fishing ground, July-Aug-Sept

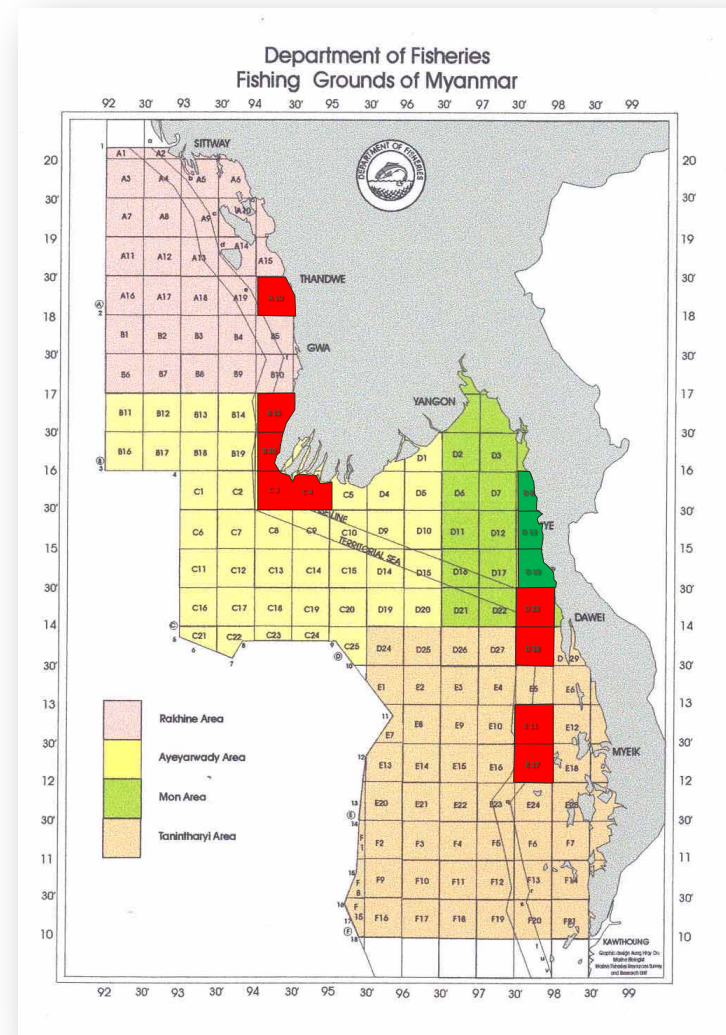
 **Sea bass with eggs (2/2006)**  
All fishing ground, Jan-Feb-Mar

 **Hard Clam (9/2008) Myeik, Palaw, Kyae chaung and Ta Bo chaung point. 20 Acre**  
Jan-Feb-Mar

 **Whale Shark (2/2001)**

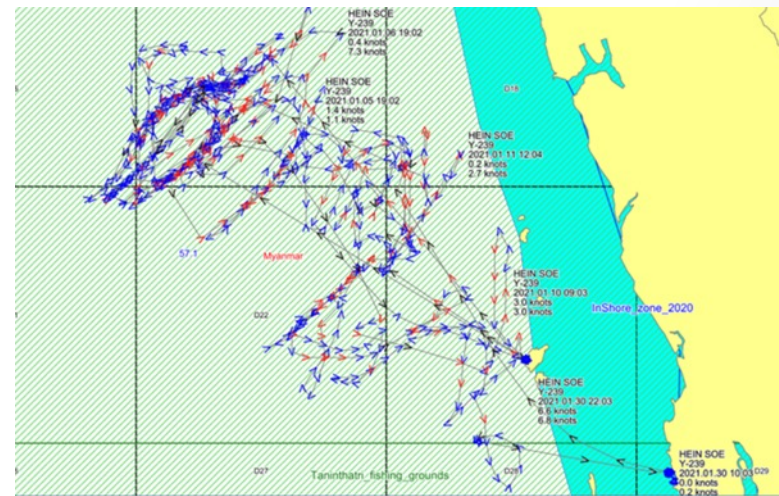
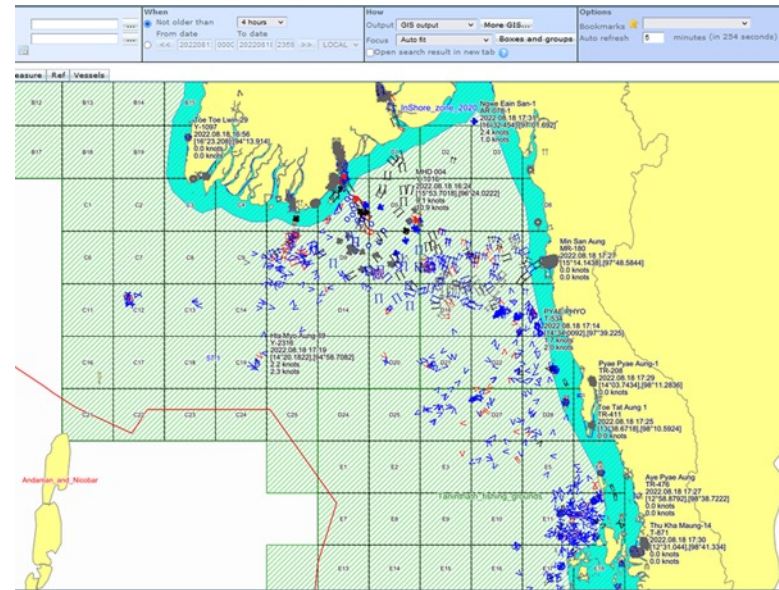
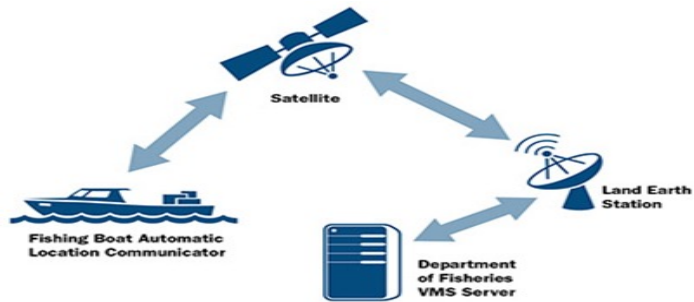
 **Marine Shrimp with eggs (3/95)**

 **Marine mammal (5/2022)**





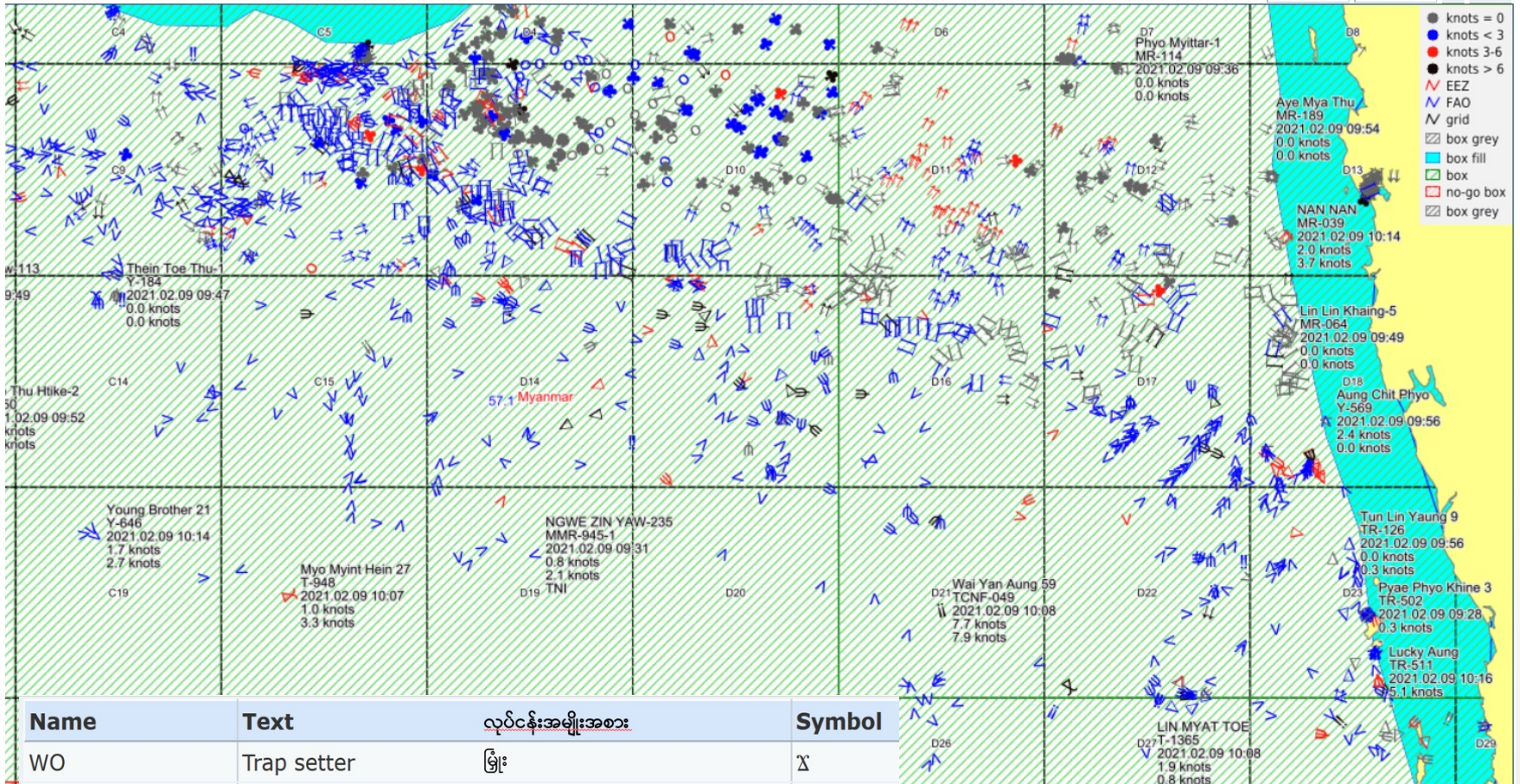
# Vessel Monitoring System





# VMS တပ်ဆင်ပြီးသည့် ကမ်းဝေးငါးဖမ်းရေယာဉ်များအား ငါးဖမ်းကိရိယာ/ လုပ်ငန်းအမျိုးအစားအလိုက် မြင်တွေ့ရပုံ

8/23/22





## 2. Implementation of MCS in Costal Area



# Sustainable Coastal Fisheries



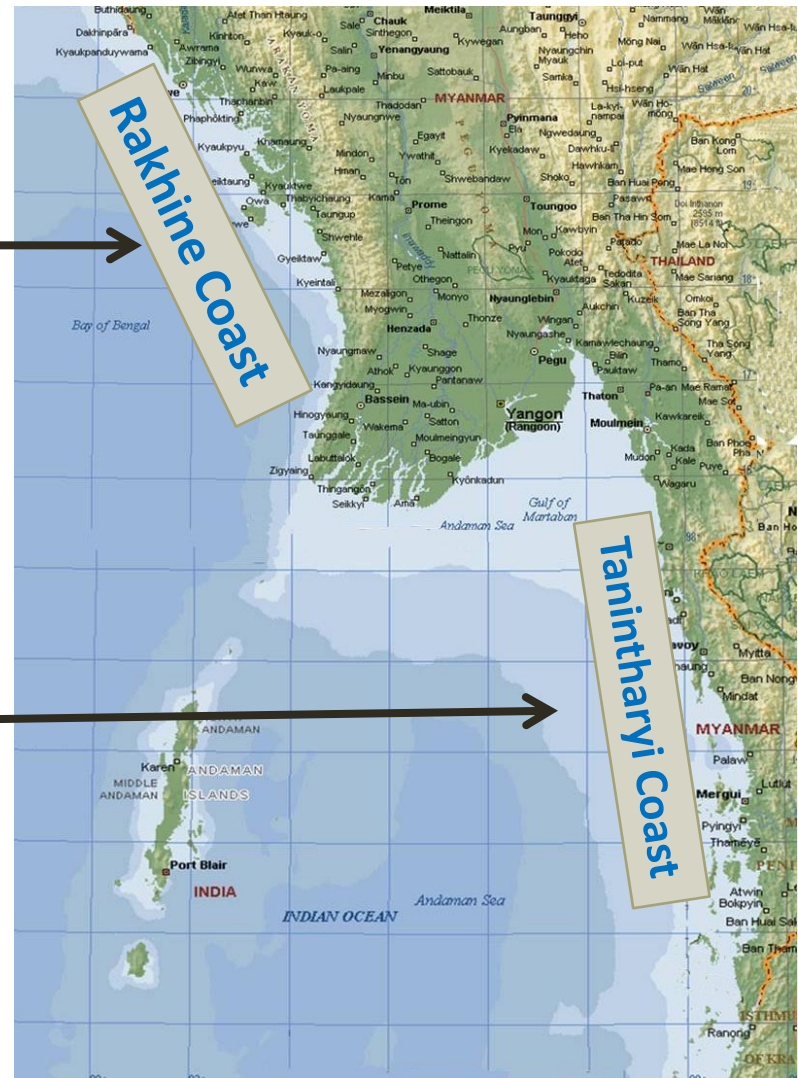
Two Patrol boats provided by Denmark-Myanmar Country Programme in 2020 to inspect of IUU activities around the LMMA areas in the Southern Coastal Zone. (DoF & MMPF and community members)



# Strengthen the cooperation among local community

Co-management area for conservation of fishery resources and eliminate IUUF cooperated with WCS, DOF and community of fisherman

LMMA area for allocated fishing ground and to conserve fisheries resources by community of fisherman cooperated with FFI & DOF and



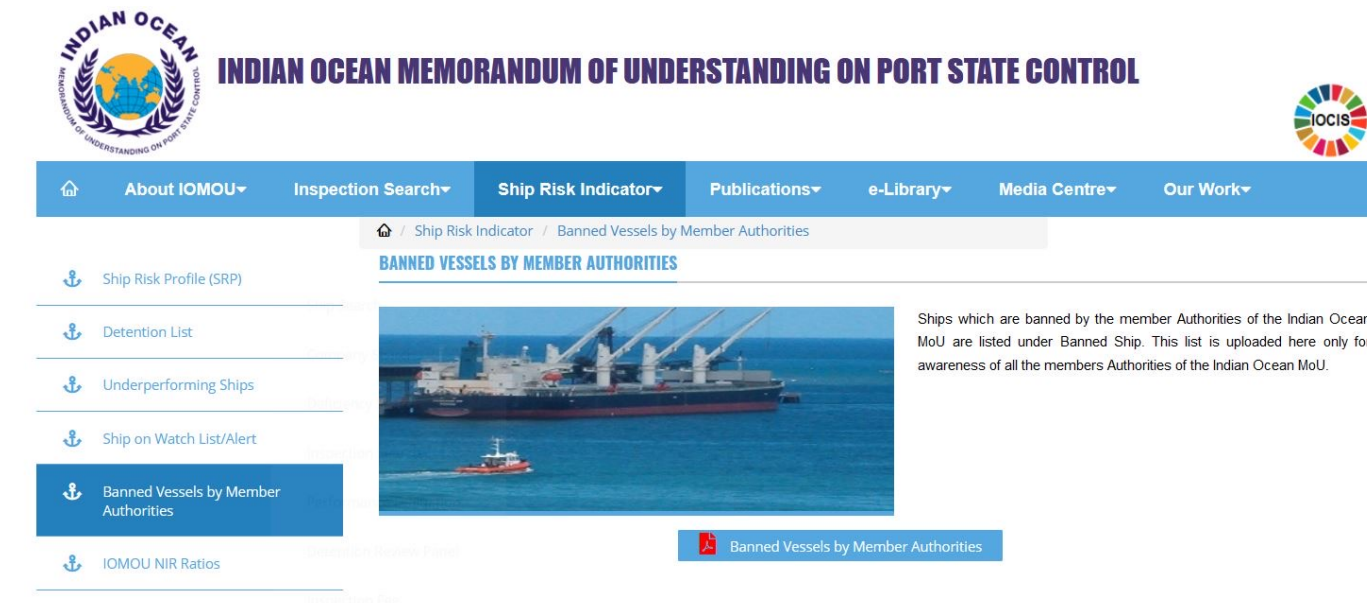


# Cooperation with Regional Fishery Management Activities

- Regular upload of update RFVR data  $\geq 24$  m to the RFVR data base under SEAFDEC/TD for sharing information among the member states
- Continuing Implementation of eACDS application that was technical supported by SEAFDEC/TD as pilot stage at three landing sites in Yangon region
- Providing the EU catch certificate for exportation of marine fisheries products to foreign countries
- Implementing the Port State Measure Agreement cooperate with regional fisheries management organization of information sharing on IUU fishing vessels
- MOU with Thailand to develop the fishery sector for sharing technical experiences and information for both fisheries and aquaculture

# F V COBIJAN

- Cooperation and discussing between Department of Fisheries, DMA, MPA, Custom and Marine Police was made.
- Denying entry (Banned permanently) Effective from 28<sup>th</sup> July 2020 12:00 Myanmar Standard
- Reported to IOMOU and entered into List of Banned Vessels by Member Authority (Myanmar)



**INDIAN OCEAN MEMORANDUM OF UNDERSTANDING ON PORT STATE CONTROL**

**BANNED VESSELS BY MEMBER AUTHORITIES**

Ships which are banned by the member Authorities of the Indian Ocean MoU are listed under Banned Ship. This list is uploaded here only for awareness of all the members Authorities of the Indian Ocean MoU.

1	COBIJA	7330399	PERMANENT	Sailing under fake certification	Myanmar
---	--------	---------	-----------	----------------------------------	---------

# Challenges

- Weakness of multilateral cooperation for information sharing to address the IUU fishing
- Insufficient scientific data collection and research for marine capture fisheries to improve MCS for sustainable fisheries management
- Insufficient HRD for effective reporting and research for development of MCS.

# Conclusion

- To improve cooperation among relevant agency such as NGOs, local and international Organization.
- To develop the efficient MCS system is essential for effective controlling of fishing capacity and IUU fishing.
- Need training and capacity building for the use and application of regulatory measures to support MCS.



**Thank You for your attention!**

