



FFA
PACIFIC ISLANDS
FORUM FISHERIES
AGENCY

Estimating IUU Fishing Losses in the Pacific Regions: Methodologies and Approaches

Regional Training on the Introduction and Methodology for Estimating
IUU Fishing Losses in South East Asia, 16 - 18 June 2026, Bangkok,
Thailand

- Overview of FFA
- Estimating IUU fishing in the Pacific tuna fisheries
 - FFA experience in estimating IUU fishing
 - Methodology and approaches
 - Why estimating IUU fishing
 - Outcome and Key message from estimating IUU fishing
- Overview of IUU fishing impact in the Pacific tuna fisheries
 - Key IUU issues
 - Main message
 - FFA response to IUU fishing
- Why MCS & impact of MCS



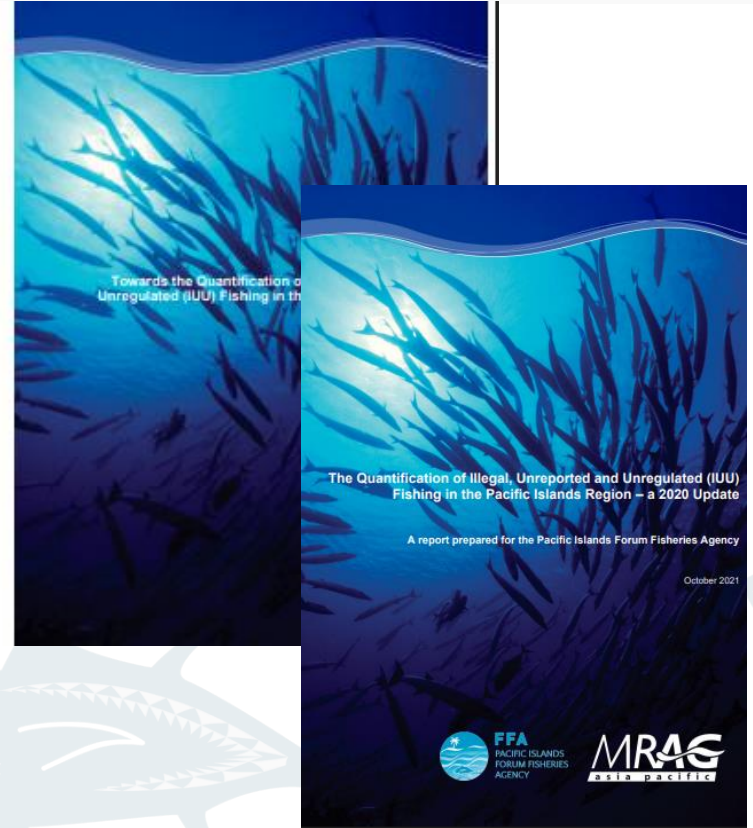
Overview of FFA

- Inter-governmental organization with 17 Member countries
- Mandate – provide technical and policy advice to Members the sustainable utilization of their tuna resources
- **Vision** - **Our PEOPLE** enjoy the greatest possible social and economic benefits from the sustainable use of offshore fisheries resources
- **Mission** - Empowerment of FFA Members
- **Key Focus Areas:**
 - Maximize economic returns
 - Enhance social benefits
 - Combat Illegal Unreported and Unregulated fishing
 - Extend regional solidarity
- Cornerstone of FFA success is COOPERATION



Estimating IUU fishing in the Pacific tuna fisheries

- To better understand the extent of IUU fishing in the Pacific tuna fisheries, FFA undertook a study to quantify IUU fishing in 2016, which was further updated in 2021.
- Studies were done by MRAG AP and commissioned by FFA



Estimating IUU fishing in the Pacific tuna fisheries – Methodology & Approach

- Bottom- up approach
- The key benefits include:
 - Provides a more accurate estimates of IUU
 - Breakdown and analysis IUU problem into discrete quantifiable units, (e.g. Illegal, misreporting, non- compliance etc.) then aggregate to produce a regional scale estimate
- Key challenges with this approach include:
 - Involves analysis of more details information (fishery, at local scale??)
 - Time consuming
 - Needs good sets of data
- Identifying key IUU risks
 - Illegal or unlicensed fishing
 - Unreported or misreported or underreporting
 - Unregulated fishing, non- compliance



Estimating IUU fishing in the Pacific tuna fisheries - Why estimate IUU fishing

- Understand the impacts loss (volume & value) through IUU fishing
- Guide changes to policy frameworks
- Prioritize and address key issues
- Prioritize tools and resources



Estimating IUU fishing in the Pacific tuna fisheries - Impact of IUU Fishing in the Pacific

Total annual **volume** and **value** of product harvested or transhipped involving IUU activity in Pacific tuna fisheries:

- 2016 Best estimates – total annual volume of **306,440t** with a estimate value of **\$616.11M** (**11% of the total WCPFC-CA Catch**)
- 2021 Best estimates – total annual volume of **192,186t** with a estimated value of **\$333.49M** (**6.5% of the total WCPFC-CA Catch**)
- Economic loss to coastal states **43.18M** (2021) compare to **152.67M** (2016)
- Main reduction driven by changes in information base – some better, some different



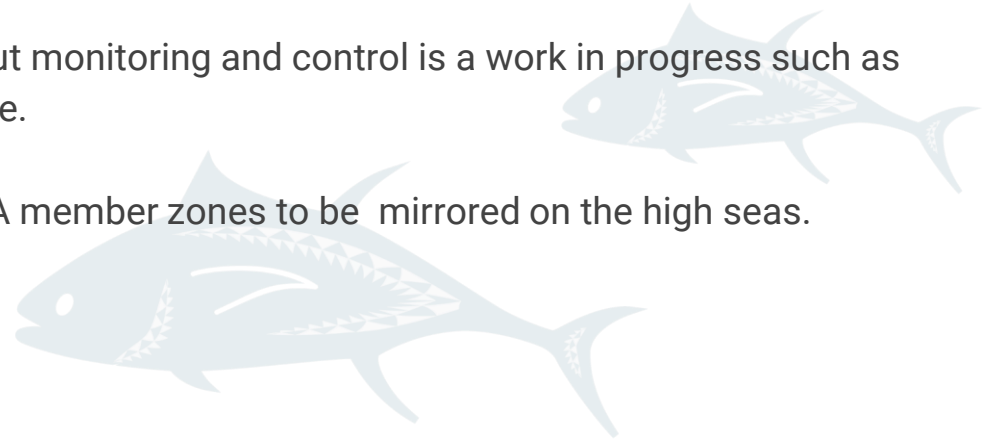
Estimating IUU fishing in the Pacific tuna fisheries - Key IUU issues

- Key IUU issues in Pacific Tuna Fisheries:
 - Misreporting- 89%
 - Unlicensed fishing- 5%
 - Non- compliance- 3%
 - Post-harvest offences- 3%.



Estimating IUU fishing in the Pacific tuna fisheries - Key message

- Significant reduction in IUU estimates since 2016 is positive.
- **Cooperation works** - Cooperative regional MCS measures have impacted on nature and scale of IUU.
- IUU estimates continue to be dominated by **authorized or licensed fleet** who engage in **unreported** fishing.
- Unlicensed fishing remains an issue at the margins.
- Estimates of illegal transshipping gone down - but monitoring and control is a work in progress such as strengthening validation of transshipment volume.
- Need for the stronger MCS arrangements in FFA member zones to be mirrored on the high seas.



Estimating IUU fishing in the Pacific tuna fisheries – Priorities Going Forward

- Priorities for strengthening MCS are in the longline sectors – Monitoring & validating catch through supply chain key issue.
- Key priority is to strengthen catch monitoring and validation throughout supply chain.
- Strengthen transshipment monitoring and control.
- Ongoing monitoring & analysis of key metrics through more real-time analysis of key risks/trends and systematic collection and understanding of MCS data.



Estimating IUU fishing in the Pacific tuna fisheries – Our Response

ENFORCEMENT

Taking effective action in response to offending to deter further non-compliance. Ensuring we develop our people and processes to target, identify and investigate potential incidents of non-compliance.

SURVEILLANCE

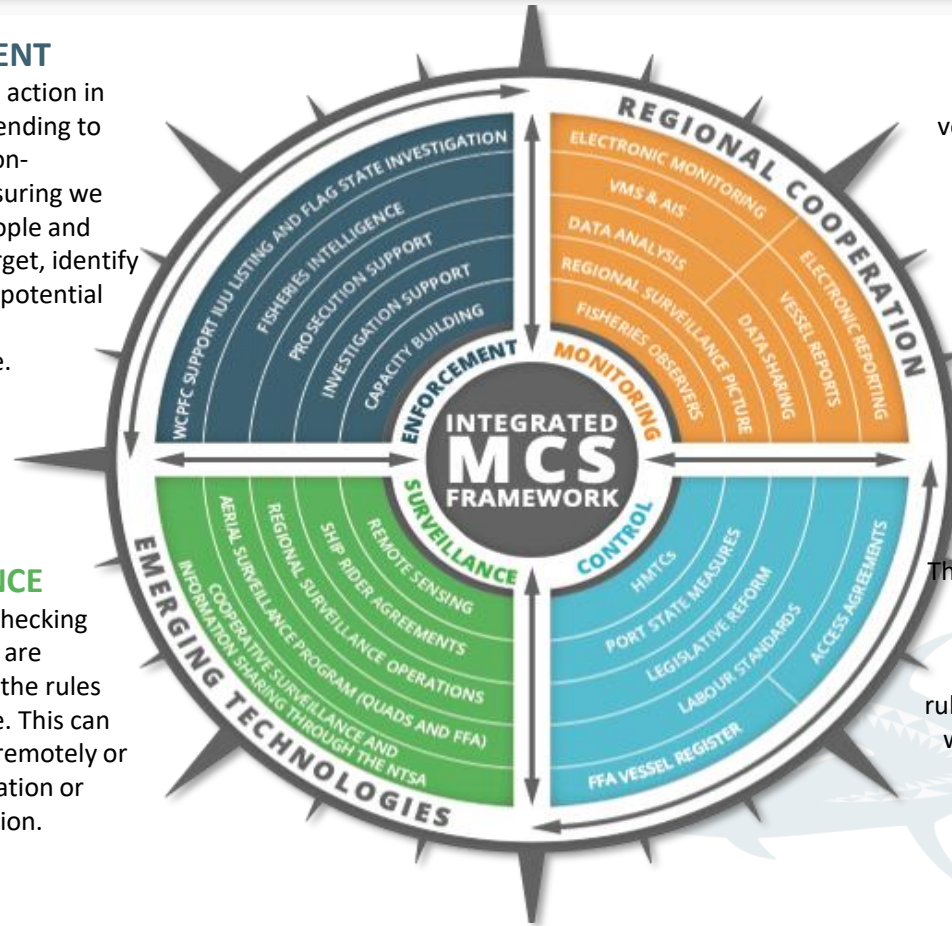
Supervising or checking that the vessels are complying with the rules that are in place. This can be undertaken remotely or through observation or physical inspection.

MONITORING

Keeping track of fishing vessels, their locations and their activities. Reporting from onboard vessel is central to this monitoring and the information is shared between FFA and Members.

CONTROL

The conditions under which fishing vessels access the tuna fishery within FFA Member waters and the rules that they must comply with. These conditions are harmonised across FFA Members' waters.



Cooperative arrangements



FFA REG

FFA Vessel Register



3 weeks ago



VMS

Vessels Monitoring System



NTIS

Niue Treaty Information System



2 weeks ago



FAL

Agreements and Licenses



OPM

Observer Placements



3 weeks ago



RMCSS

Regional MCS Strategy



ASP

Air Surveillance Program



Vessels of Interest

Vessels of interest including RFMO IUU vessels



VBI

Vessel Boarding Inspection



RFMO

WCPFC RFV & Transshipments



MCS

Monitoring, Control and Surveillance



FFA Regional Fisheries Surveillance Centre (RFSC)

- Conduct Operations 365 days a year (Operation 365) to complement members MCS efforts.
- Coordinate Aerial Surveillance Program and QUADs regional support.
- Maintain strong professional relationship with Regional Partners & WCPFC to coordinate regional MCS efforts, incl. on the High Seas.
- Support the conduct of bilateral and multilateral surveillance activities under the Niue Treaty Subsidiary Agreement (NTSA).
- Provision of a reliable analyzed and risk assessed Regional Surveillance Picture (RSP) which alerts members of potential IUU fishing in their EEZ or adjacent HS.



Our Success, Challenges & Opportunities



Strong **collaboration** and **cooperation**



Develop **capacity** amongst our people



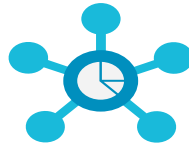
Focus on **continual improvement**



Supporting **regional and national** implementation



Integrated MCS using a broad suite of compatible tools



Data, information sharing and **availability** across membership

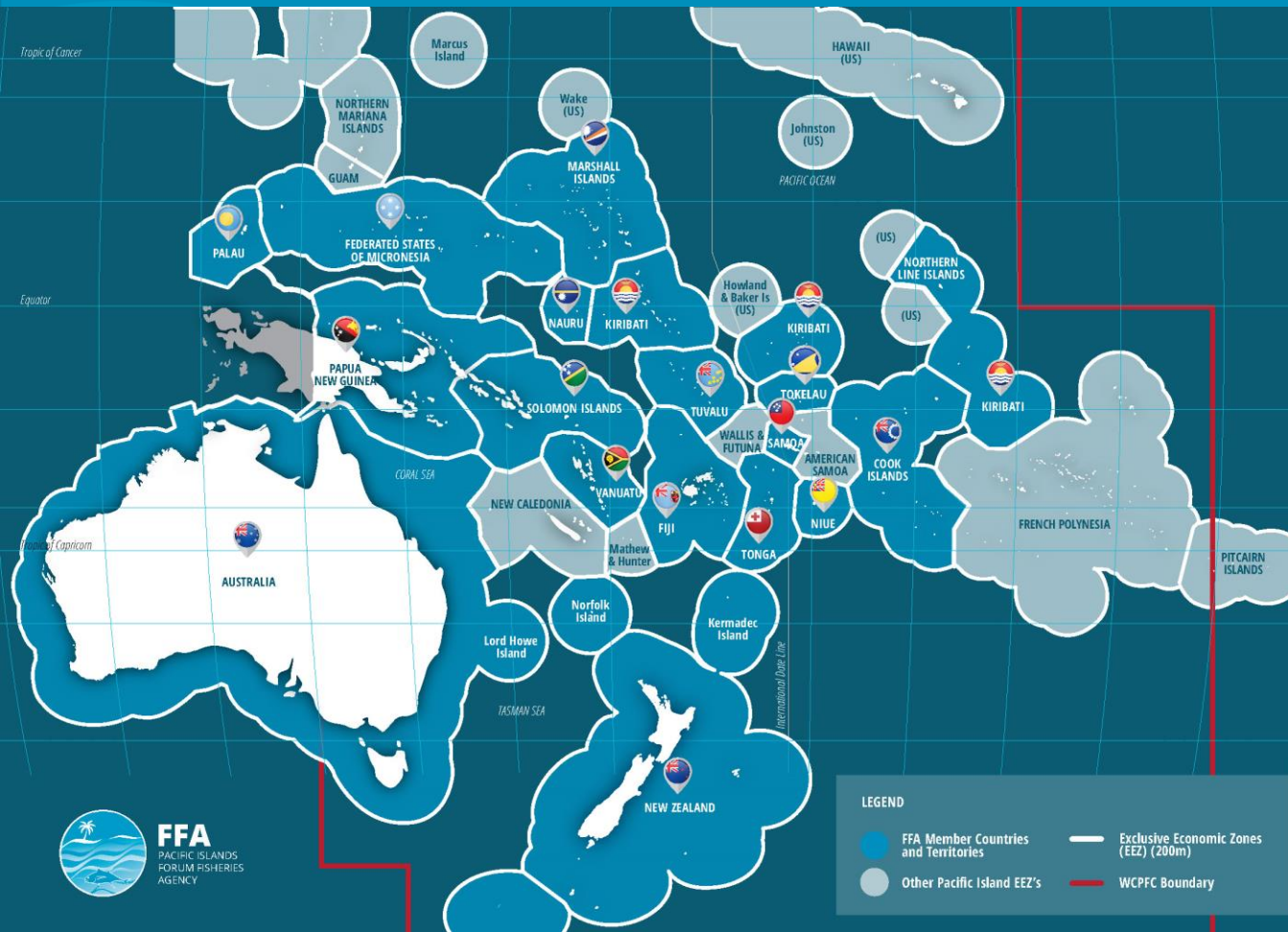


Clear strategy for regional MCS priorities

Why Monitoring, Control, Surveillance and Enforcement (MCS&E)?



Pacific Tuna Fisheries



LEGEND

- FFA Member Countries and Territories
- Other Pacific Island EEZ's
- Exclusive Economic Zones (EEZ) (200m)
- WCPFC Boundary

17
EEZs

Approximately
30,569,000 km²

55%
in 2020

of the world's tuna
originated from the
WCPO

\$500
million

in access fees for
FFA Members

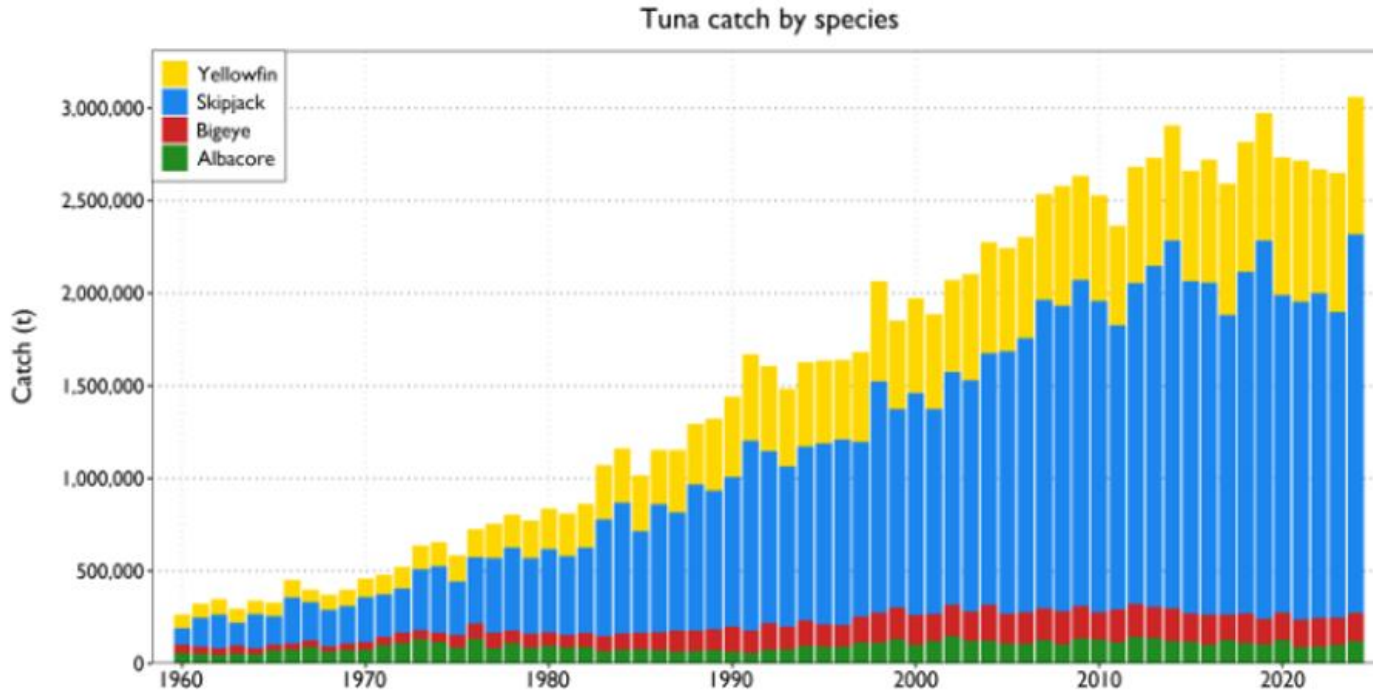
\$900
million

in export earning
for
FFA Members

27,800
in 2022

Employment in
tuna related sector

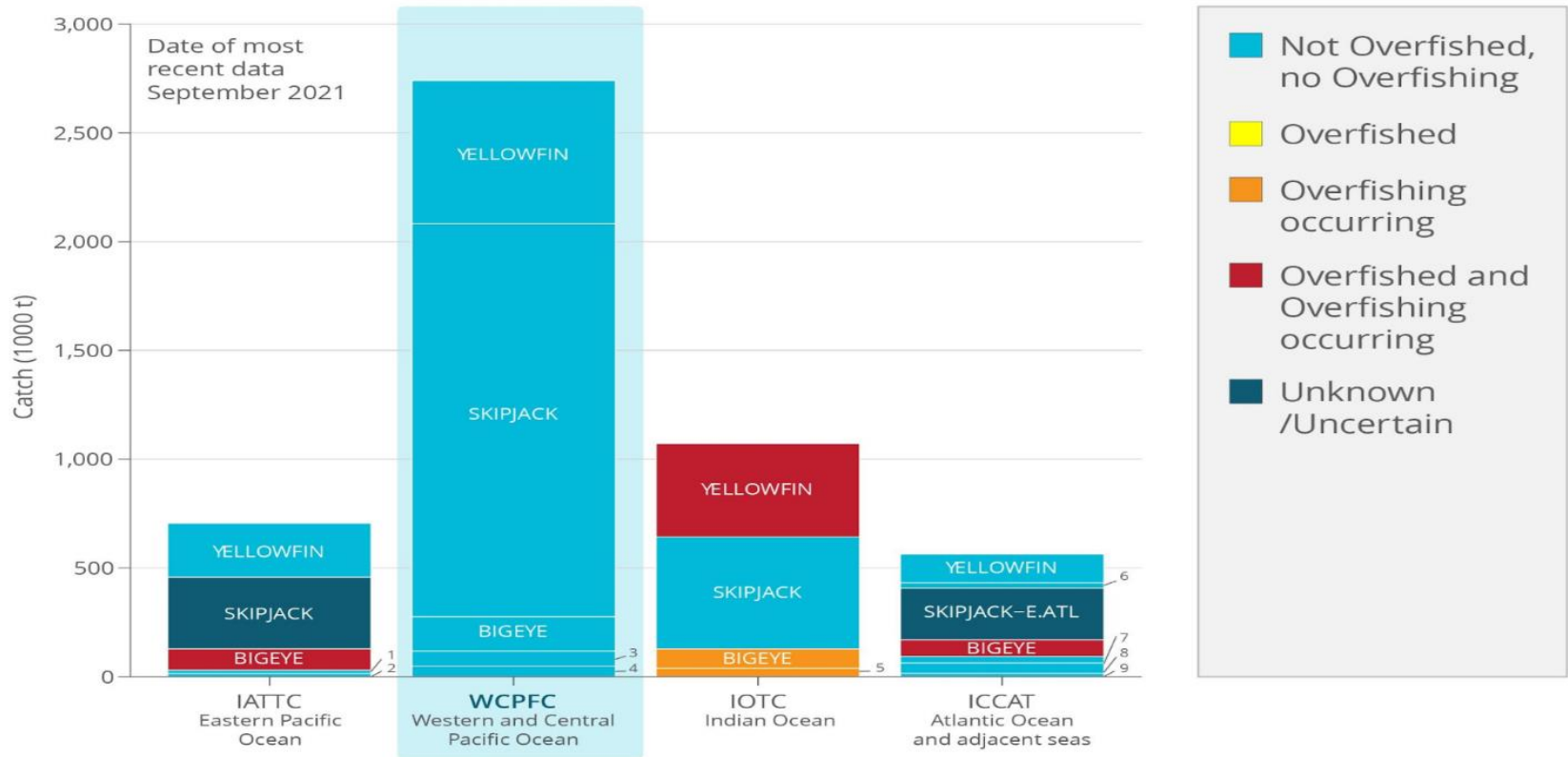
Total WCPFC-CA catch by species



- 2024 record catch
- Over 50% global tuna
- Sustained catch of 2.5- 3 million metric tons for 15 years



Status of tuna stocks in WCPO



Conclusion

- Important to have clear objectives or reasons to estimate IUU fishing
- Use an IUU Methodology & Approach that meets your IUU estimation objective



Thank you

