

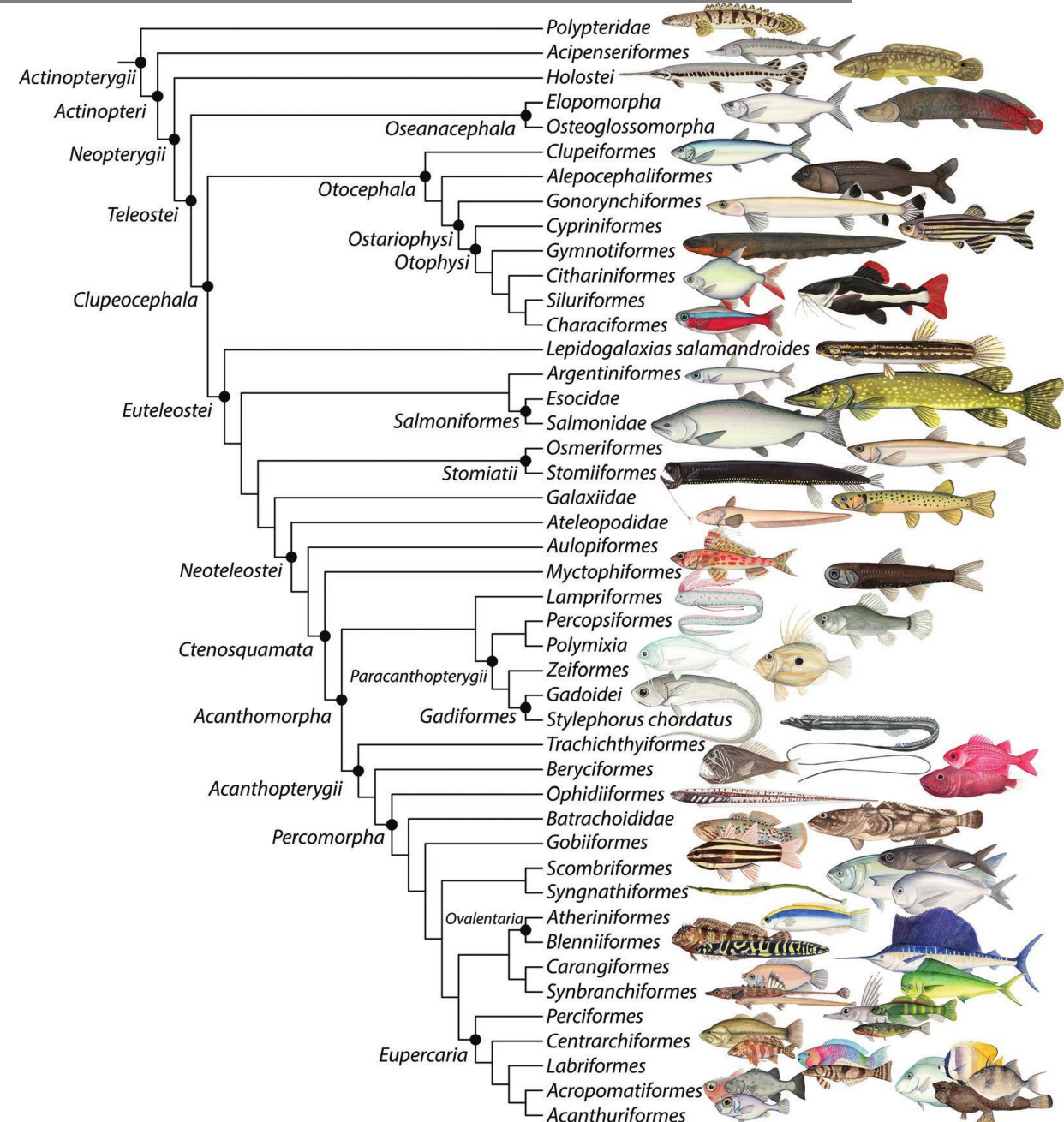
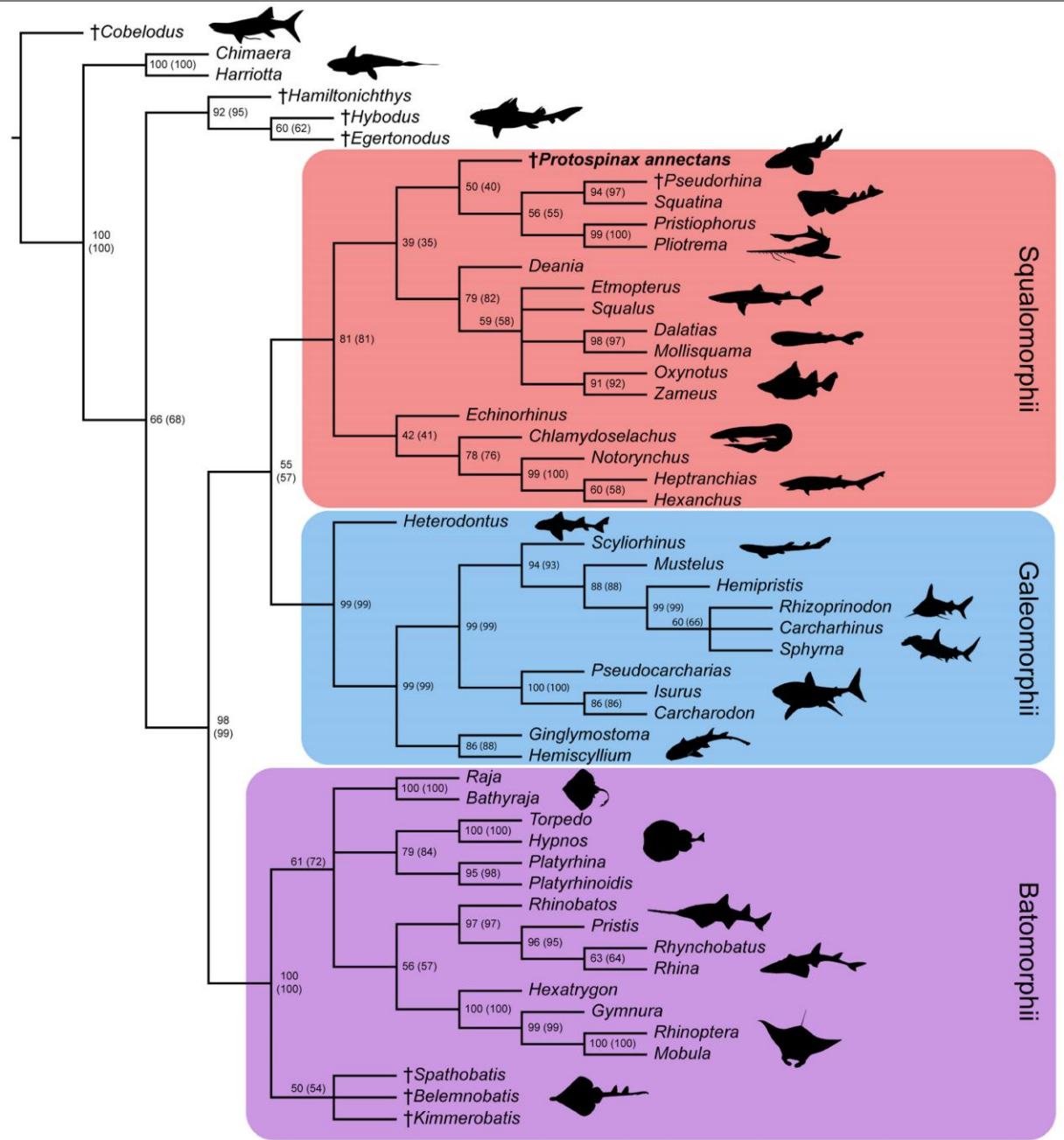


# Common Fish Species Found in The Gulf of Thailand

Supapong Pattarapongpan, FO, RDD

SEAFDEC/TD

# Elasmobranch and Bony Fish Evolution Tree



# Major group of fish found

- Elasmobranchii

- Selachii

- Orectolobiformes

- Hemiscyllidae

- *Chiloscyllium punctatum*



- Batoidea

- Myliobatiformes

- Dasyatidae

- *Brevitrygon heterura*

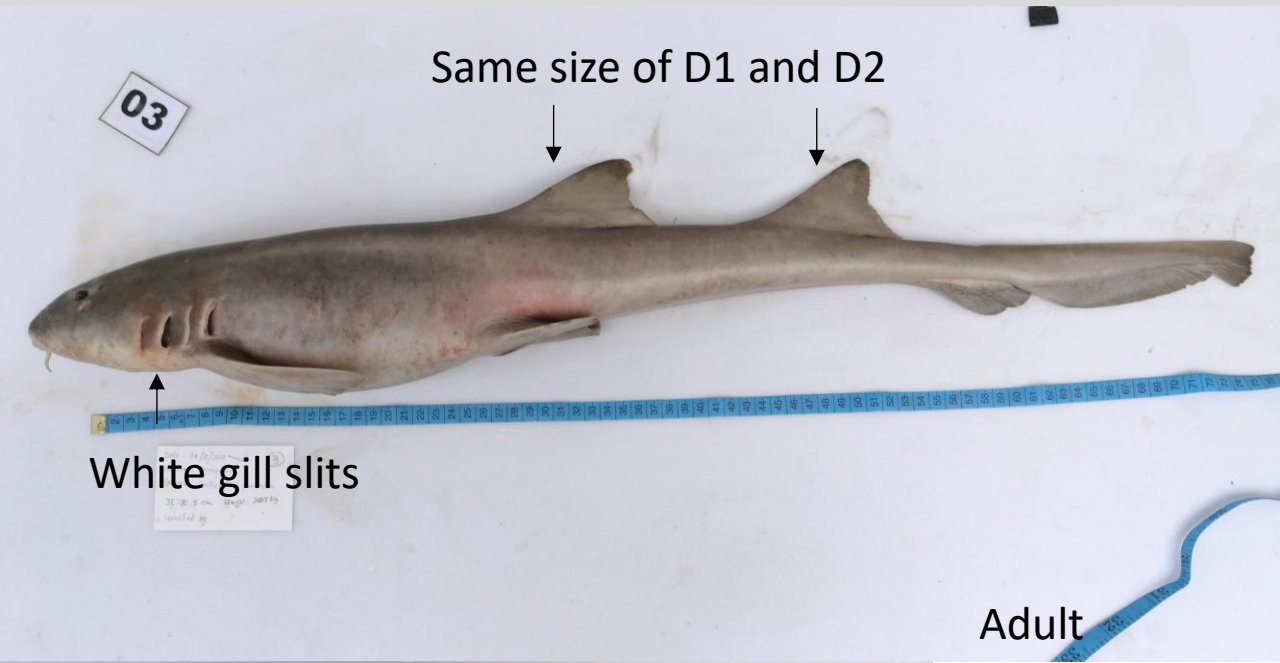
- *Brevitrygon imbricata*

- *Maculabatis gerradii*

- *Telatrygon zugei*



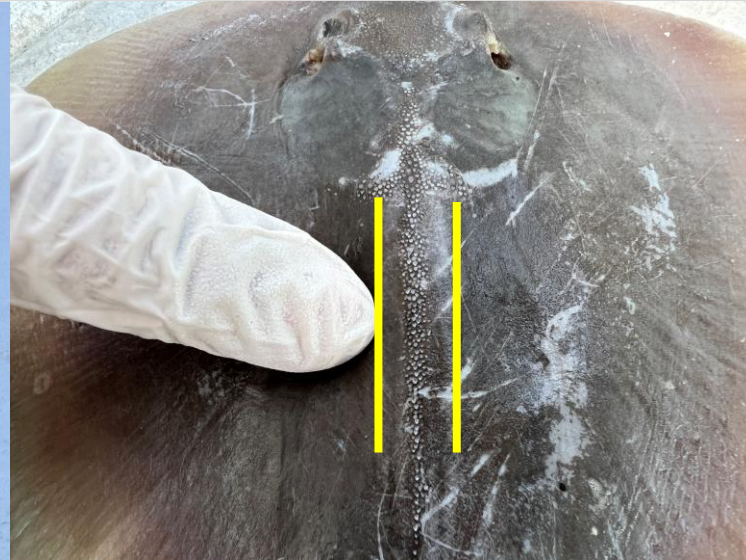
## Hemiscyllidae



ฉลามกบ  
Brownbanded bambooshark  
Grey carpet shark  
*Chiloscyllium punctatum*



## Dasyatidae



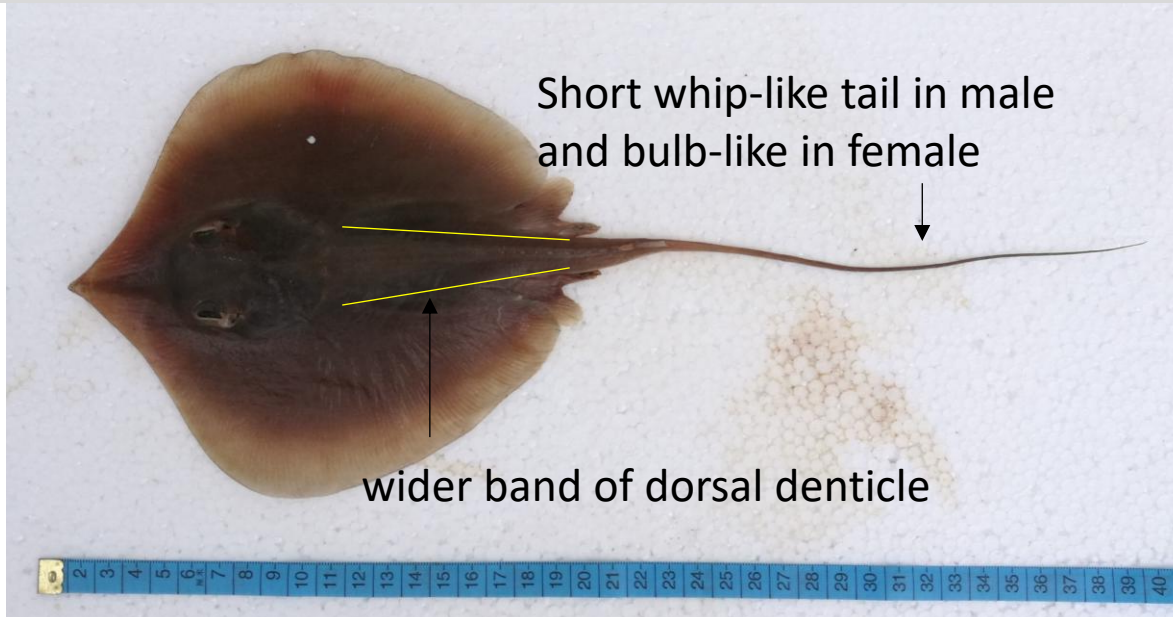
กระบาง กระเบนตุ๊กตา

Scaly whipray

Bengal whipray

*Brevitrygon imbricata*

## Dasyatidae



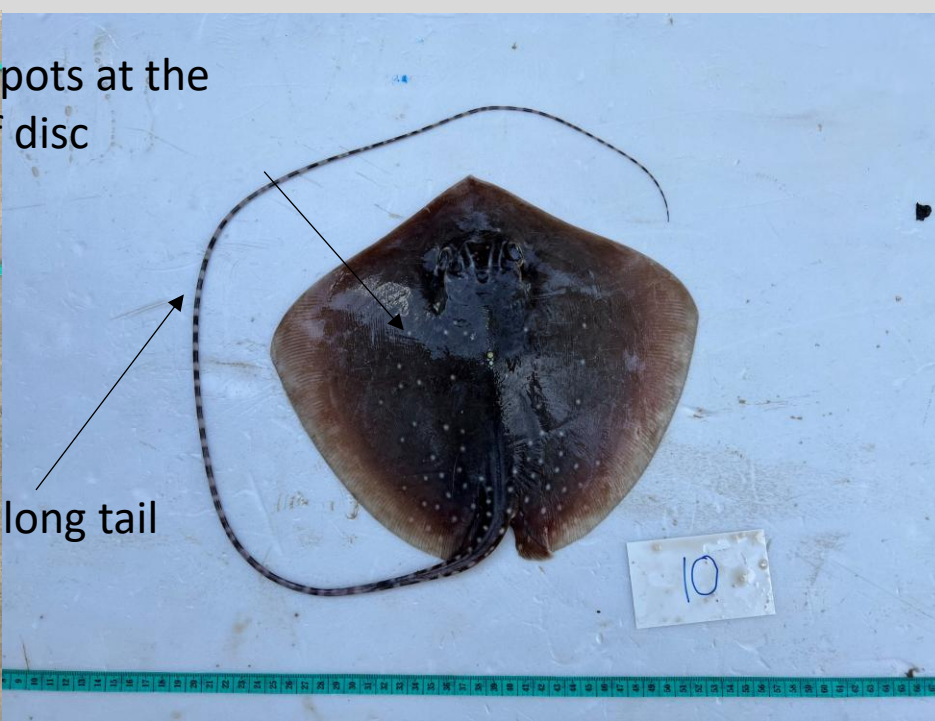
กระบาง กระเบนตี๊กตา  
Dwarf whipray  
*Brevitrygon heterura*

## Dasyatidae



Small white spots at the dorsal side of disc

Whip-like and long tail



Spots absent in some juvenile



กระเบนแมลงวัน

Whitespotted whipray  
*Brevutrygon heterura*

Large-green denticle with smaller few white denticles behind

## Dasyatidae



กระเบนจมูกแหลม

Sharpnose stingray

*Telatrygon zugei*

Have a distinctively sharp snout



# Major group of fish found

- Actinopterygii

- Teleostei

- Anguiliformes

- Muraenidae

- *Gymnothorax pseudothyrsoides*

- *Gymnothorax thyrsoides*

- Ophichthidae

- *Ophichthus cancrivorus*



- Clupeiformes

- Clupeidea

- *Sardinella gibbosa*

- Aulopiformes

- Synodontidae

- *Saurida elongata*

- *Saurida undosquamis*



- Dactylopteriformes

- Pegasidae

- *Pegasus* sp.

## Muraenidae



มอเจย์

Highfin Moray Eel

*Gymnothorax pseudothyrsoides*

- brownish body with some spots
- no distinct darker color at head
- longer snout compared to *G. thyrsoides*



โหลมอริย์

*Gymnothorax pseudothyrsoides* (Bleeker, 1853) 72.0 cm TL.



## Muraenidae



มอเรียตาโต

White-eye Moray Eel

*Gymnothorax thyrsoideus*

- yellowish body with dark spots all along
- distinct darker color at head
- white eye orbital

## Ophichthidae



ปลาไหลงู

snake Eel

*Ophichthus cancrivorus*

- dark brown in dorsal and white or yellowish in ventral

- dark dorsal fin

- small pectoral fin

## Clupeidae



อกแฉะ หลังเขียว

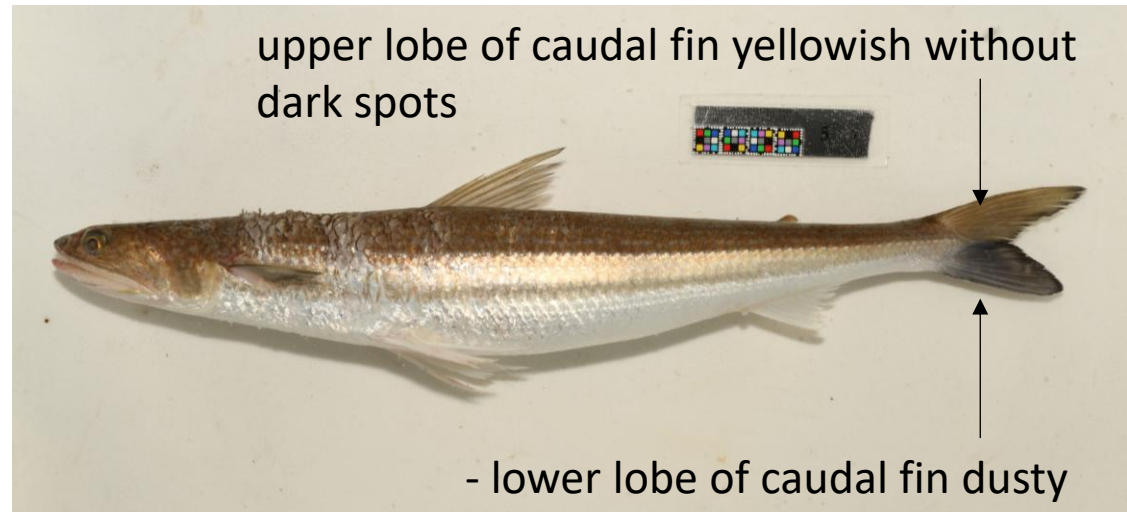
Fringe headed sardine

*Sardinella gibbose*

- mouth opening before eye orbital
- greenish dorsal
- yellowish band presented dorsal side

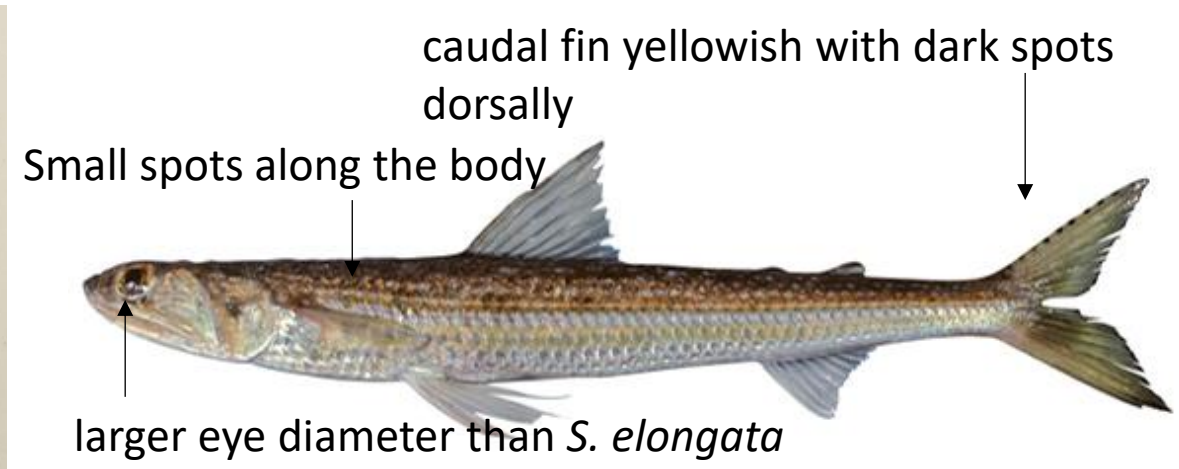


## Synodontidae



ปากคมยาว  
Slender Lizardfish  
*Saurida elongata*

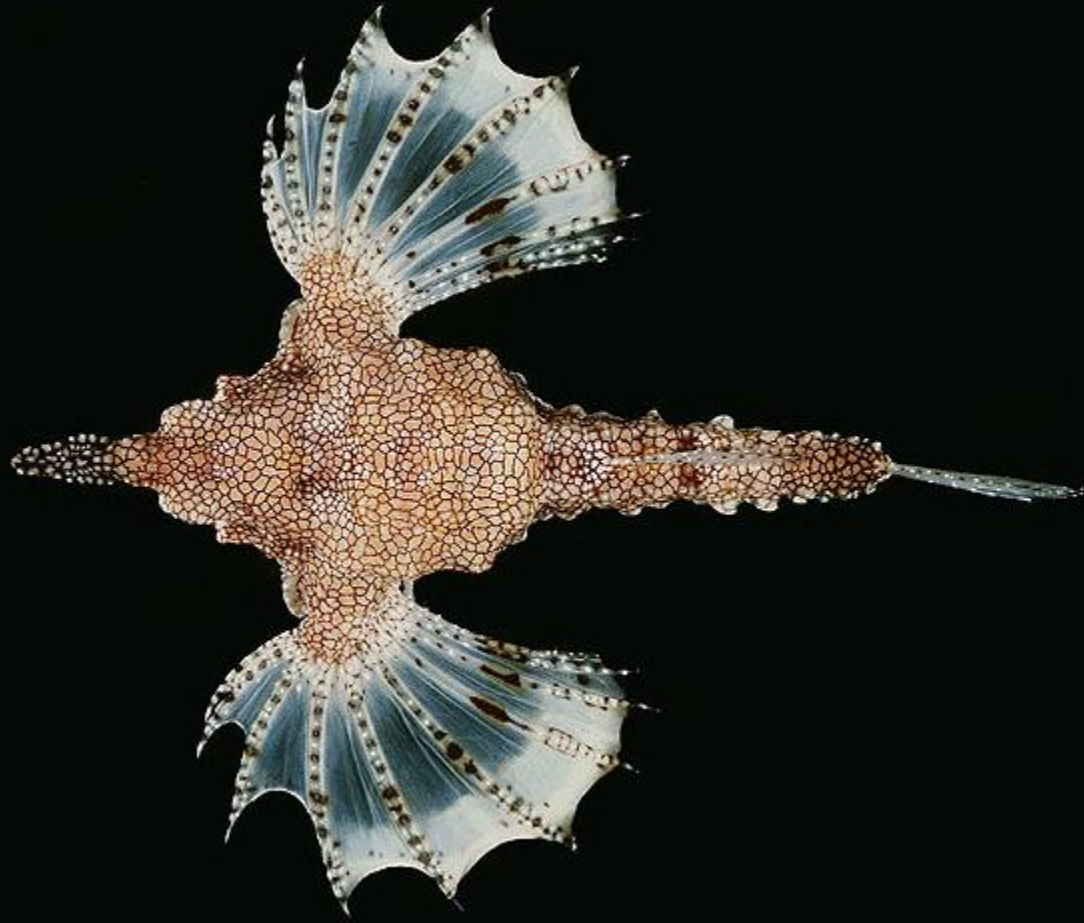
- longer body length than other *Saurida*
- smaller eye diameter than other *Saurida*
- longer snout than other *Saurida*
- usually found as a large lizardfish



ปากคมจุด  
Brushtooth Lizardfish  
*Saurida undosquamis*

- usually found as a smaller lizardfish

## Pegasidae



- ปลาผีเสื้อกลางคืน
- Seamoth
- *Pegasus* sp.

# Major group of fish found

- Lophiiformes
  - Antennariidae
    - *Antennarius numifer*
- Syngathiformes
  - Fistulariidae
    - *Fistularia petimba*
- Scorpaeniformes
  - Dactylopteridae
    - *Dactylopterna orientalis*
  - Apistidae
    - *Apistus carinatus*
  - Scorpaenidae
    - *Pterois russelii*
  - Synanceiidae
    - *Inimicus inerveri*
  - Platycephalidae

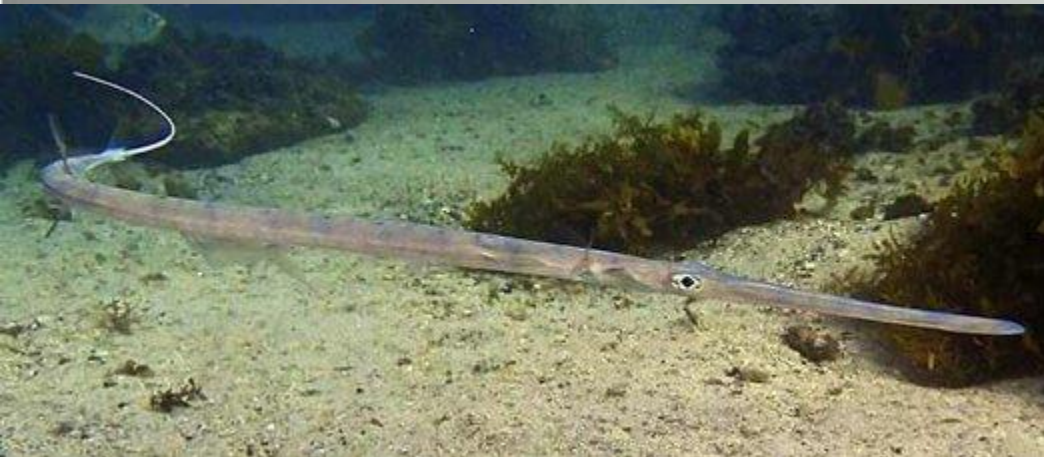


## Antennariidae



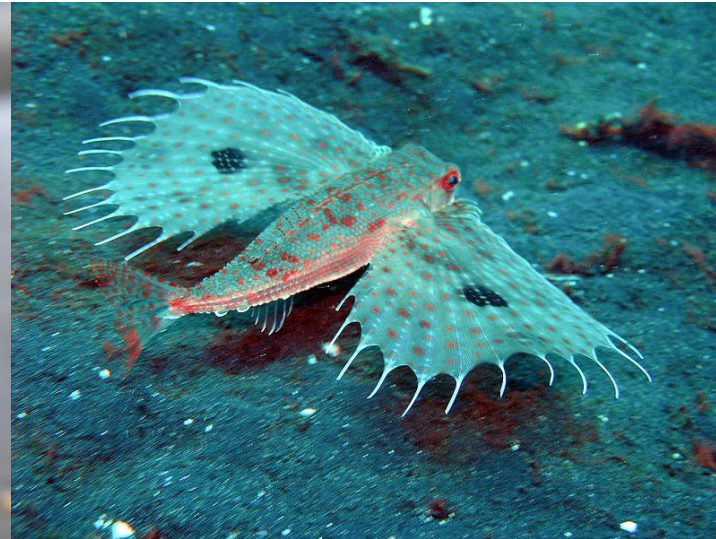
- ปลาตกบ
- Frogfish
- *Antennarius numifer*
- comes in many color and size
- but can be distinct by the large-black spot at the 2<sup>nd</sup> D-fin

## Fistulariidae



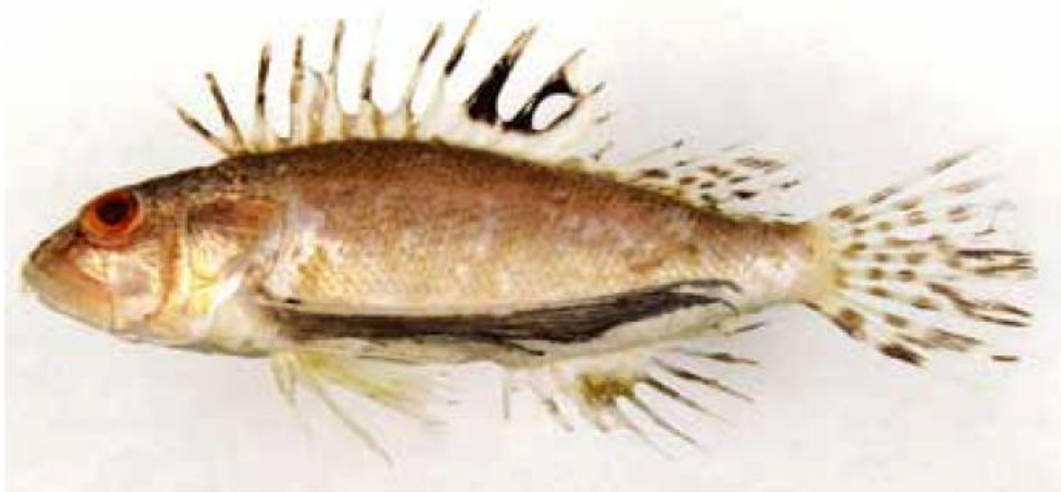
- ปลาปากแตง
- Rough Flutemouth
- *Fistularia petimba*
  - very common, found almost every stations
  - large lateral scale and distinctive dorsal spines presented
  - long filament at the forked-tail

## Dactylopteridae



- ปลานกฮูก
- Oriental Helmet Gurnard
- *Dactylopterus orientalis*

## Apistidae



- ปลาแมงป่อง
- Ocellated Waspfish
- *Apistus carinatus*
  - Elongated pectoral fin similar to lionfish
  - No horns or ridges
  - Dark distinct spot at posterior of 1<sup>st</sup> dorsal fin

*Apistus carinatus*, KAUM-I. 32821, 10.0 cm SL  
Gulf of Thailand (SS), 25 Oct. 2010

## Scorpaenidae



- ปลาสิงโต
- Plaintail Firefish
- *Pterois russelii*

- Elongated pectoral fin, reached beyond body length
- Distinct orbital ridges with antenna-like skin presented
- Elongate fin spines and fin rays
- Reddish body with several dark bands

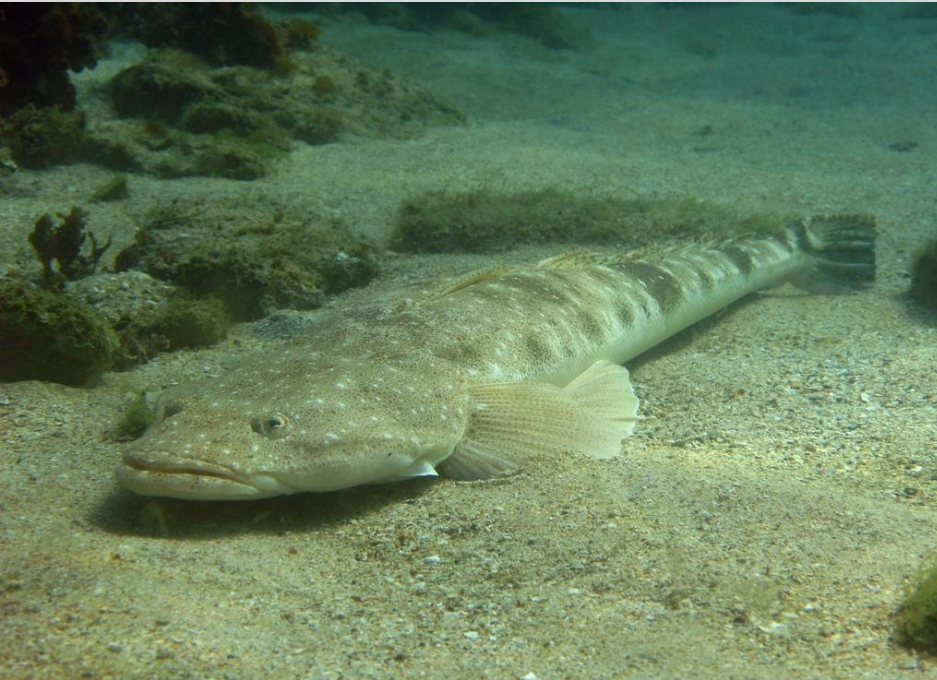
## Synanceiidae



- ปลาแมงป่อง ปลากะรังหัวโขน ปลาหิน
- Longsnout Stinger
- *Inimicus cuvieri*



## Platycephalidae



*Platycephalus indicus*



*Elates ransonettii*



*Kumococius rodericensis*



*Grammoplites scaber*



*Platycephalus cultellatus*



*Inegocia japonica*

- ปลาหางควาย ช้างเหยียบ
- Flathead
- Very difficult to do species ID without proper taxonomic guidebook

# Major group of fish found

- Perciformes

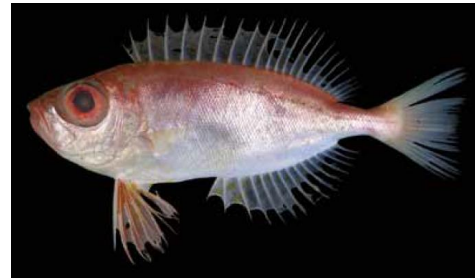
- Serranidae

- *Epinephelus coioides*
    - *Epinephelus quoyanus*
    - *Epinephelus sexfasciatus*



- Priacanthidae

- *Priacanthus macracanthus*
    - *Priacaathus tyenus*



- Apogonidae

- *Apogon pleuron*
    - *Apogon spp.*



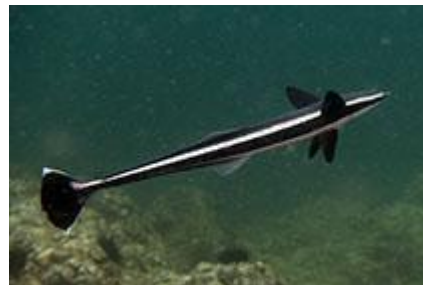
- Rachycentridae

- *Rachycentron canadum*

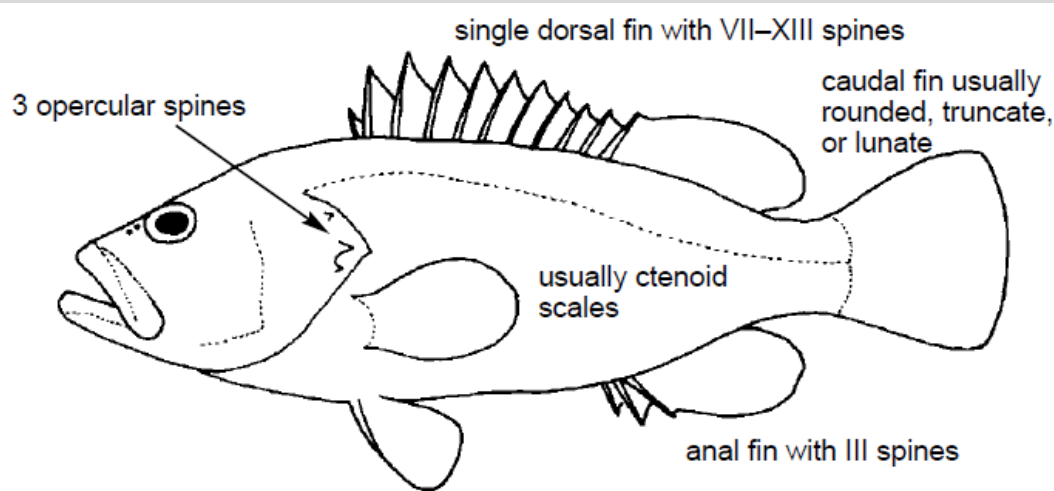


- Echenidae

- *Echenius naucrates*



## Serranidae



- เก้าจุด เก้าจุดแดง
- Orange-Spotted Grouper
- *Epinephelus coioides*
  - body dark brown with small reddish spots
  - dark band can be seen, especially juvenile

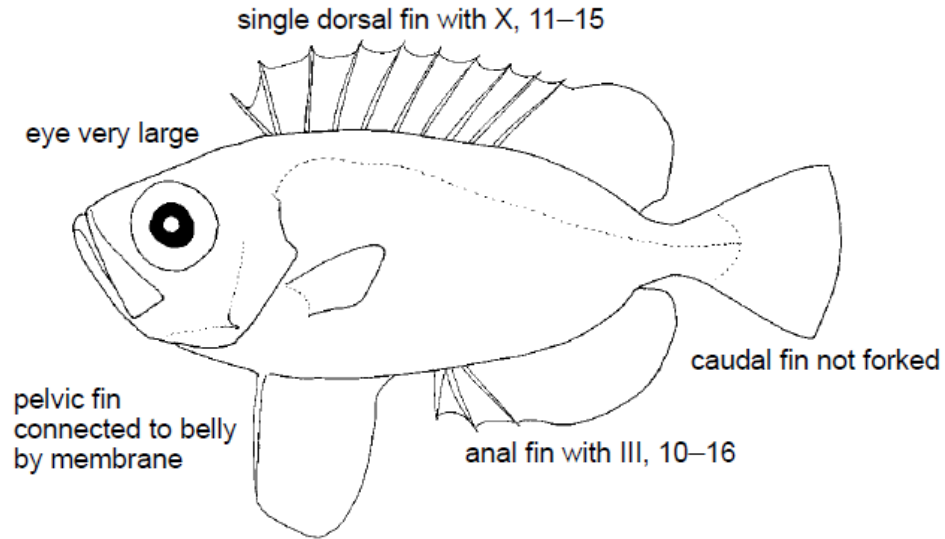


- เก้าหกแถบ
- Sixbar Grouper
  - small light spots presented
  - clear 6 dark bands presented
- *Epinephelus sexfasciatus*

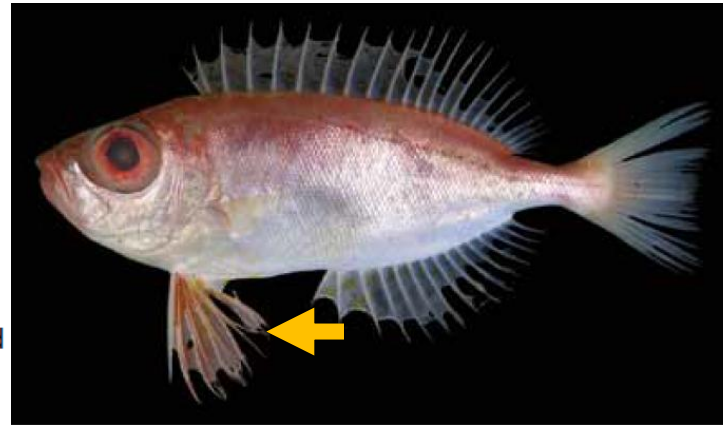


- เก้าตุ๊กแก
- Longfin Grouper
  - shortest snout
  - largest dark spots found throughout of the body
- *Epinephelus quoyanus*

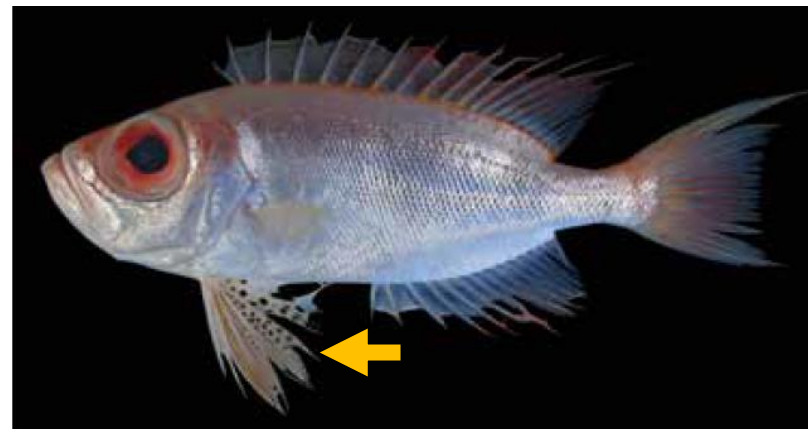
## Priacanthidae



- ปลาทาหวาน
- Bigeyes, Bullyeyes

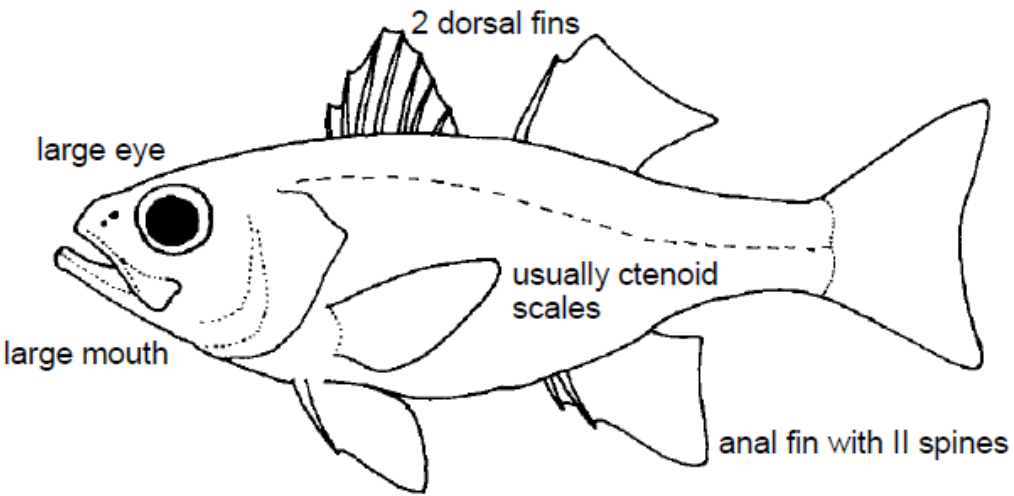


- Brownspotted Bigeye
- *Priacanthus macracanthus*
- smaller head and eyes
- reddish in the dorsal
- truncated caudal fin



- Purple spot
- *Priacanthus tayenus*
- larger head and eyes
- pink in the dorsal
- truncated caudal fin with slightly elongated upper lobe

## Apogonidae



- อมไข่เส้นใหญ่
- *Apogon pleuron*
  - body with clear-thick band
  - all fin reddish
  - always found in large school



- อมไข่เส้นเล็ก
- *Apogon fasciatus*



- อมไข่เหลือง
- *Apogon cavitis*
- อมไข่จุด
- *Apogon endekataenia*



- อมไข่ครีบน้ำขาว
- *Apogon truncatus*

*Apogon truncatus*, KAUM-I. 17203, 12.4 cm SL off Terengganu (KT), 10 Jan. 2005



- อมไข่ดำ
- *Apogon niger*

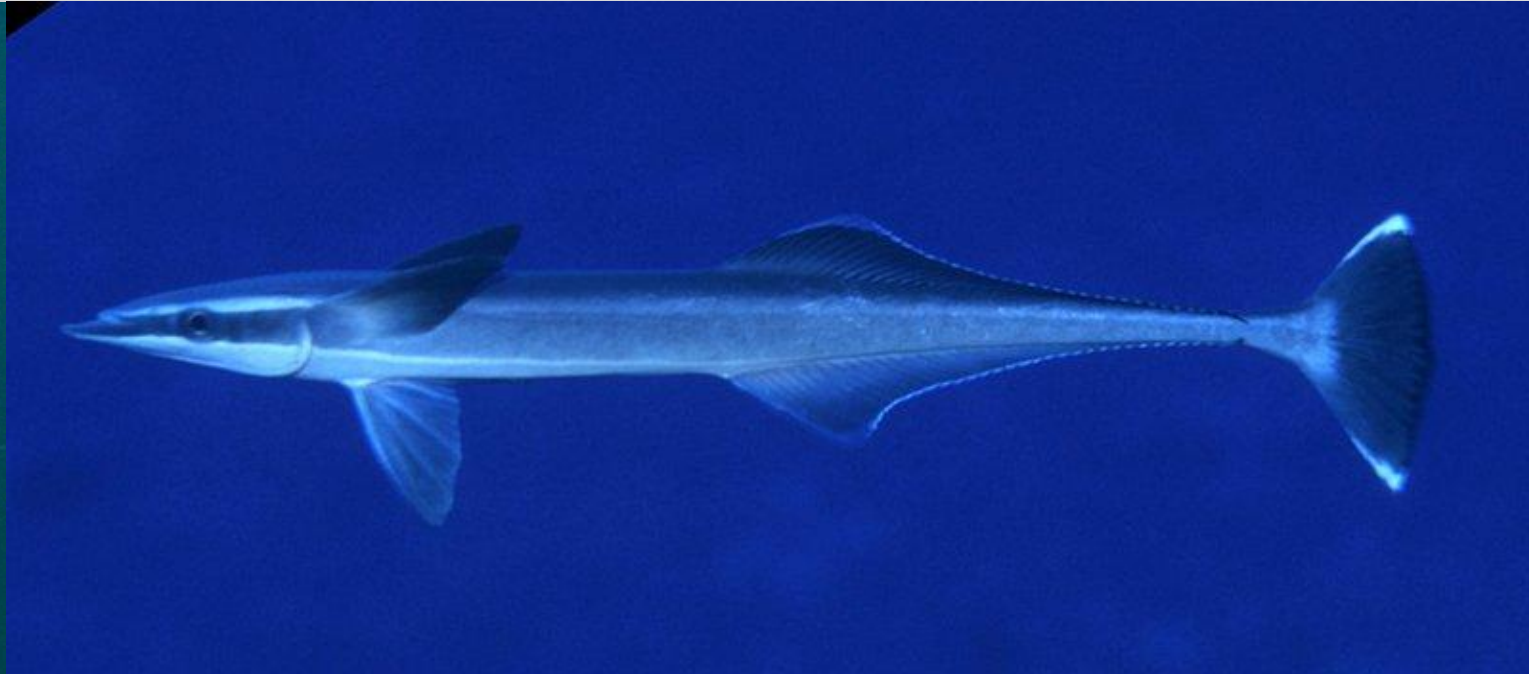
*Apogonichthyoides niger*, KAUM-I. 17296, 6.3 cm SL off Terengganu (KT), 20 Jan. 2005

## Rachycentridae



- ช่อนทะเล
  - Cobia
  - *Rachycentron canadum*
- body cylindrical and elongate
  - 3 dark bands along the longitudinal side of body
  - 8 distinct dorsal spine presented
  - pectoral fin in abdominal position
  - no sucker disc

## Echenidae



- เหาฉลาม
- Ramora
- *Echenius naucrates*



\*comparing with *R. canadum*

# Major group of fish found

- Perciformes

- Carangidae

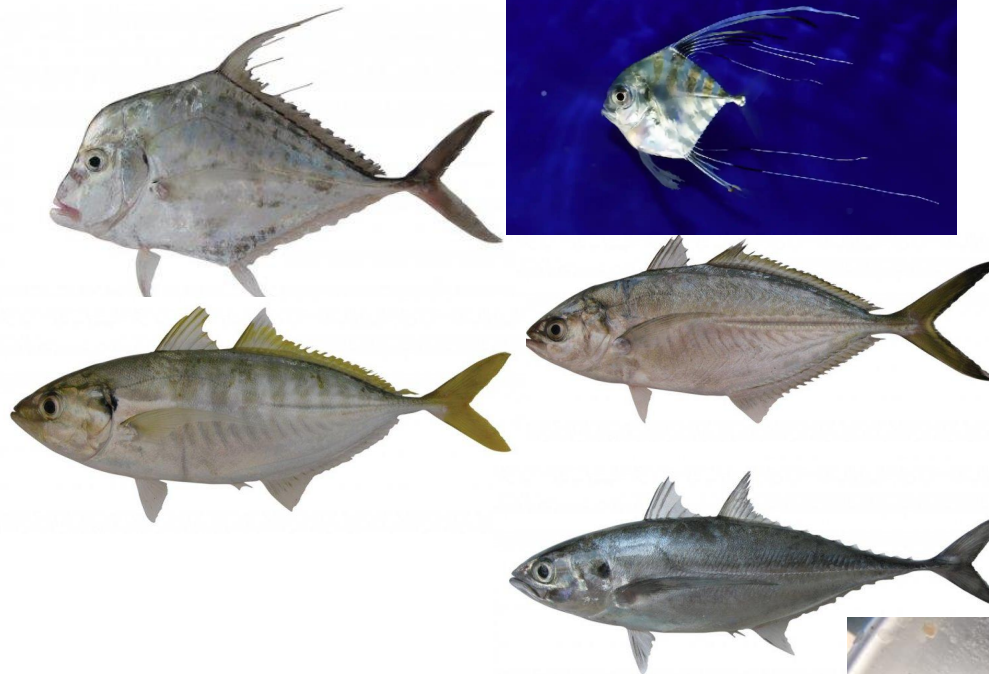
- *Alactis ciliaris*
    - *Alepes vari*
    - *Atule mate*
    - *Parastromateus niger*
    - *Megalaspis cordyla*

- Leiognathidae

- *Equulites oblongus*
    - *Equulites stercorarius*
    - *Eublekeria jonesi*
    - *Secutor indicus*
    - *Photopectolaris bindus*

- Lutjanidae

- *Lutjanus madras*
    - *Lutjanus vitta*



## Carangidae



- ไฉมงาม
- Threadfin
- *Alectis ciliaris*
  - compressed body
  - silverish body
  - extremely elongate dorsal and anal fin ray in juvenile
  - juvenile usually entering in Ban Pae

## Carangidae



- สีเงินรากลาย
- Herring scad
- *Alepes vari*

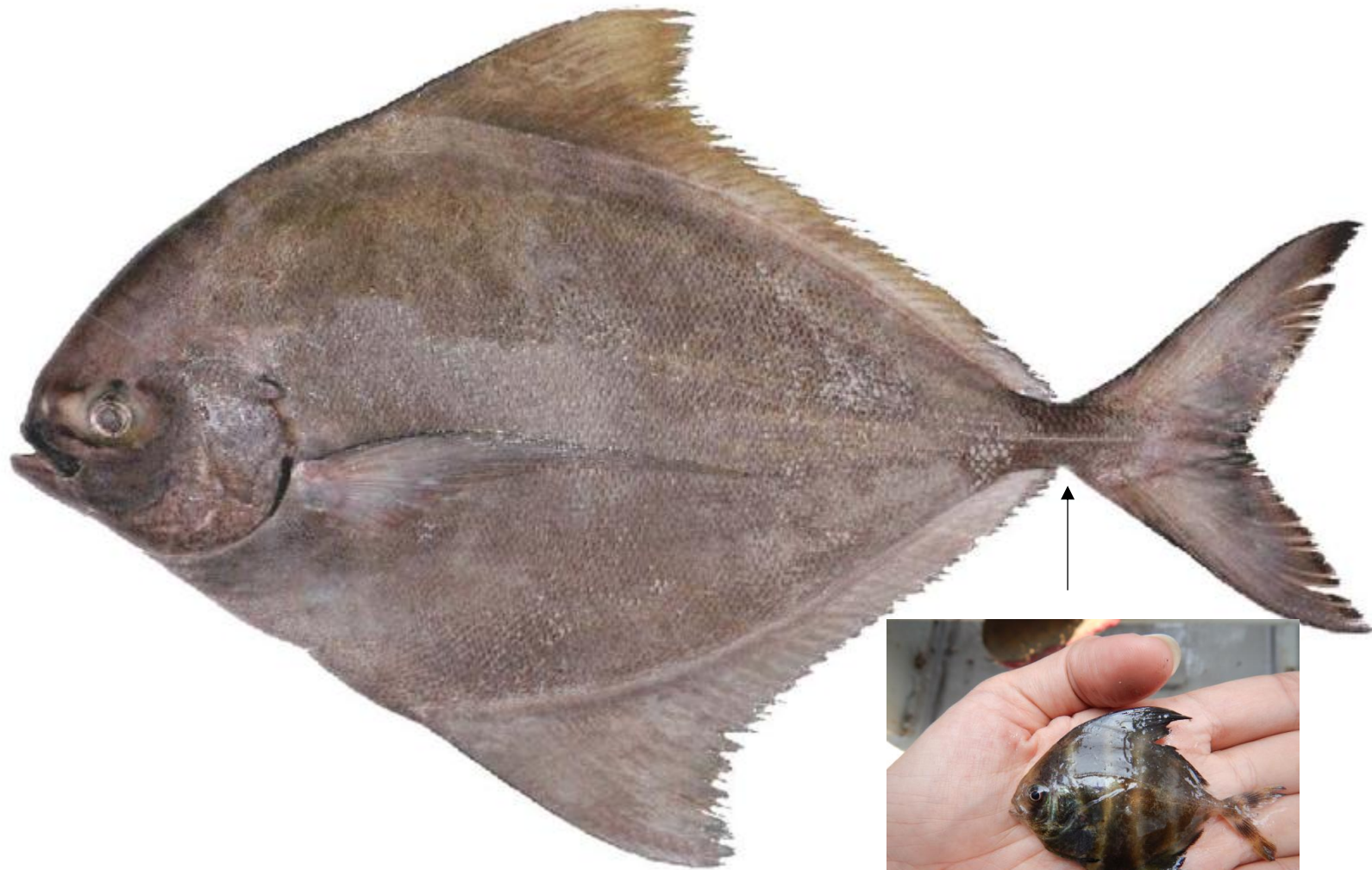
- body length about 4 times of head length
- no clear bars at the lateral side of body
- caudal fin moderately large, larger than body depth
- pectoral fin length less than half of body



- สีเงินบั้ง
- Yellowtail scad
- *Atule mate*

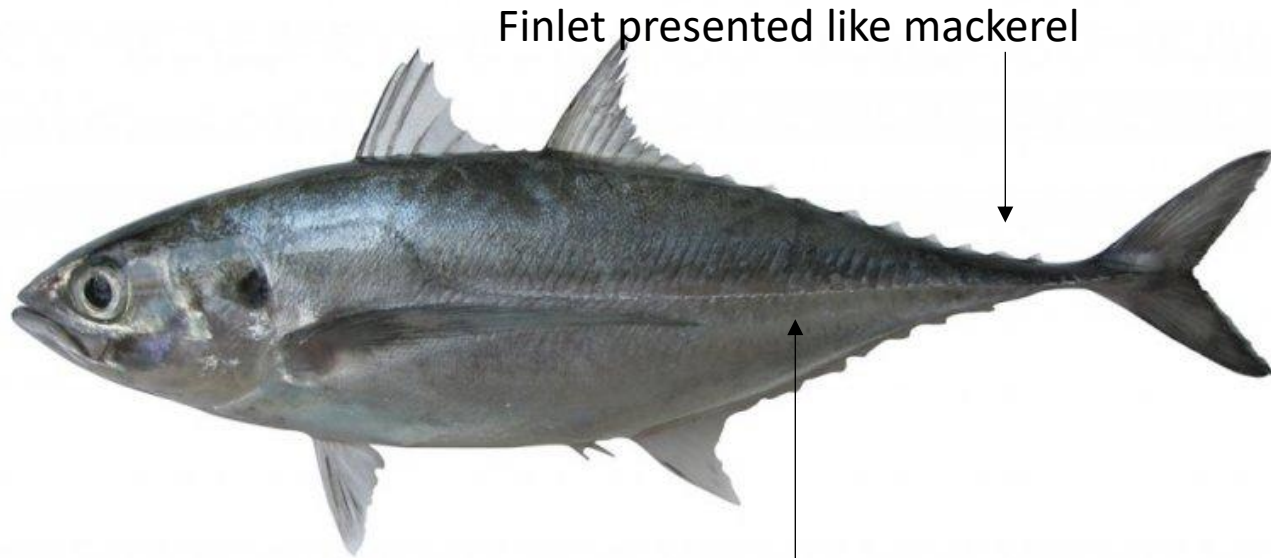
- body length less than 4 times of head length
- dark green bar can be observed as well as dark spot at the top of operculum
- caudal fin depth less than body depth
- pectoral fin elongated more than half of body

## Carangidae



- ปลาจะละเม็ดดำ
  - Black Promfret
  - *Parastromareus niger*
- body extremely depth and compressed
  - dark brown or dark grey throughout the body
  - pelvic fin absented
  - juvenile caught by trawl in Ban Pae

## Carangidae

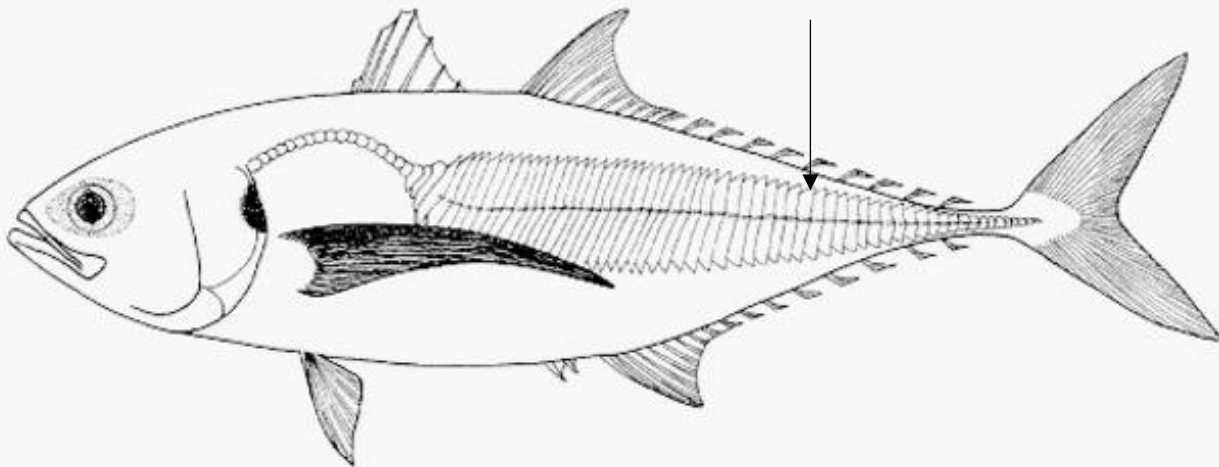


Finlet presented like mackerel

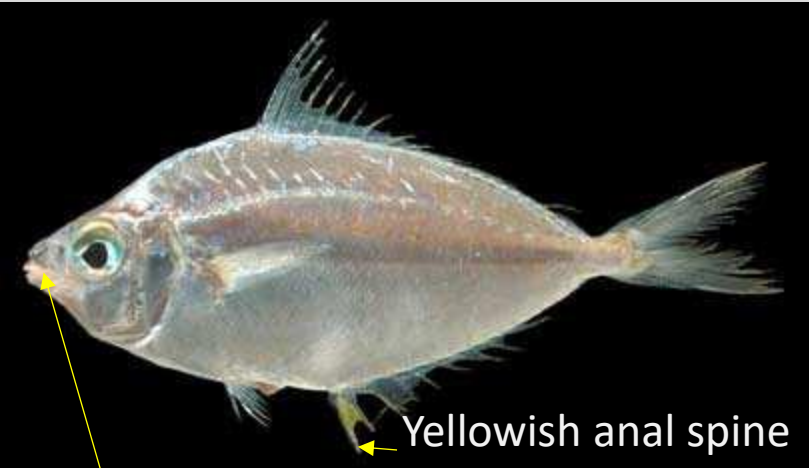
Large lateral scale/scute presented

- สีกุณแข็งโก๋ หางแข็ง
- Torped Scad
- *Megalaspis cordyla*

- torpedo-like shape
- finlet presented
- distinctively large lateral scale
- pectoral fin well-developed, longer than half of body

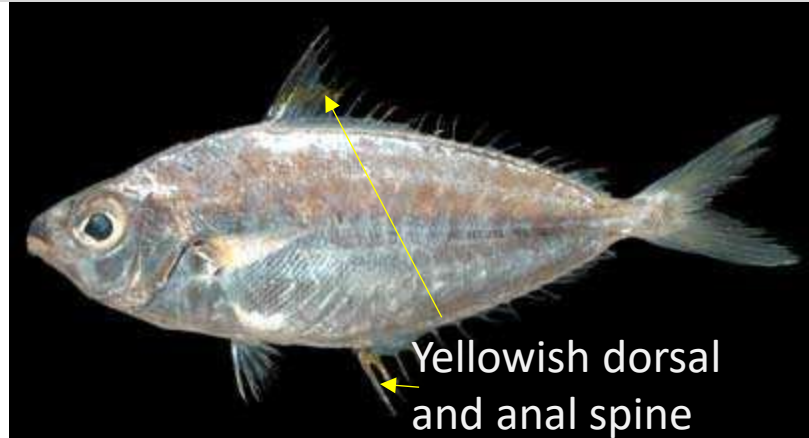


## Leiognathidae



- เป็น เป็นรี
- Oblong Ponyfish
- *Equulites oblongus*

- body depth more than half of body length



- เป็น
- Slender Ponyfish
- *Equulites stercorarius*

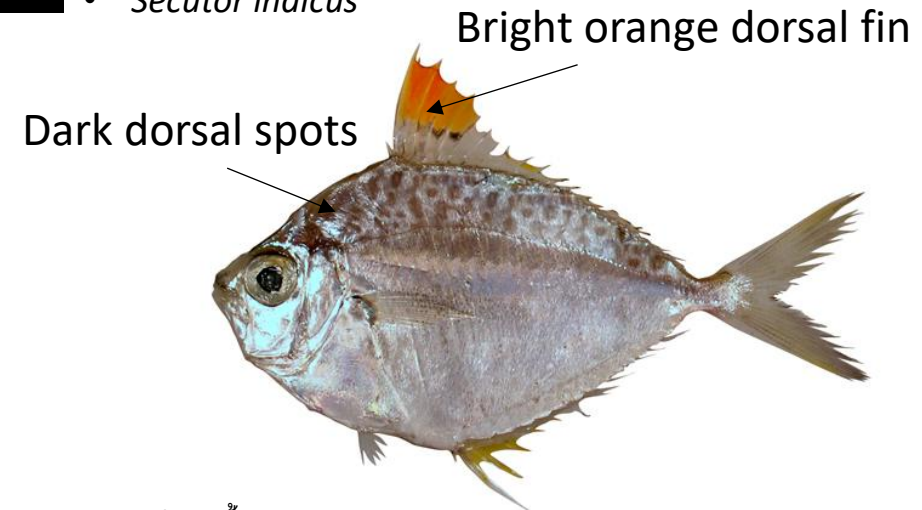
- body depth about half of body length



- Yellowish Ponyfish
  - *Eubleekeria jonesi*
- head depth more than half of body depth

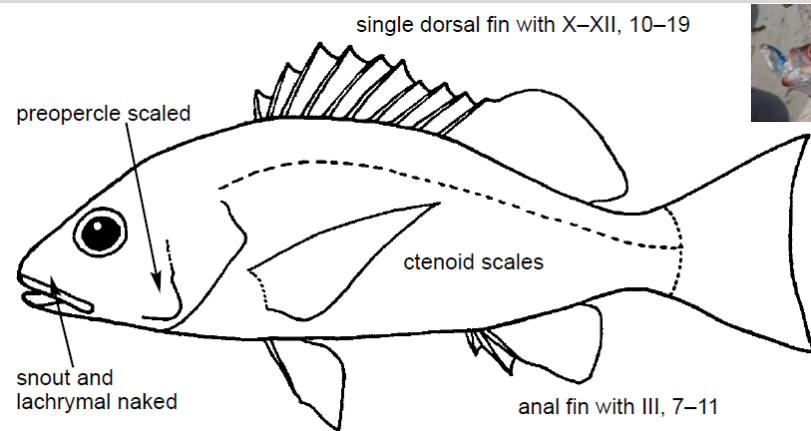


- เป็นแกลลอน
- Dots and dashes Ponyfish
- *Secutor indicus*

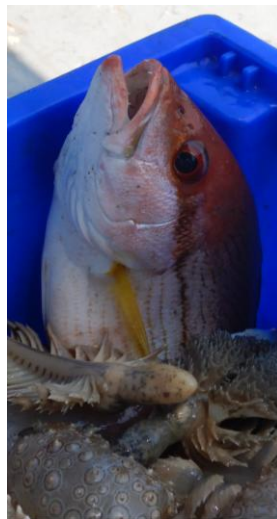


- เป็นกระดาน
- Orangefin Ponyfish
- *Photopectolaris bindus*

## Lutjanidae



*Lutjanus madras*, KAUM-I. 33013, 12.3 cm SL  
Gulf of Thailand (SS), 3 Nov. 2010



*Lutjanus vitta*, KAUM-I. 32966, 15.7 cm SL  
off Chantha Buri (SP), 1 Nov. 2010

- กะพงแดงข้างเหลือง
- Indian Redsnapper
- *Lutjanus madras*
  - more yellowish than red
  - small size
  - usually caught in a large school
- กะพงแดงข้างแถบ
- Brownstriped Redsnapper
- *Lutjanus vitta*
  - more red than yellowish
  - larger size
  - usually caught solitary

- Perciformes

- Gerridae

- *Gerres erythrourus*
    - *Pentaprion longimanus*

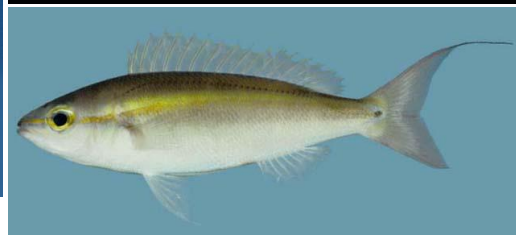


- Hemulidae

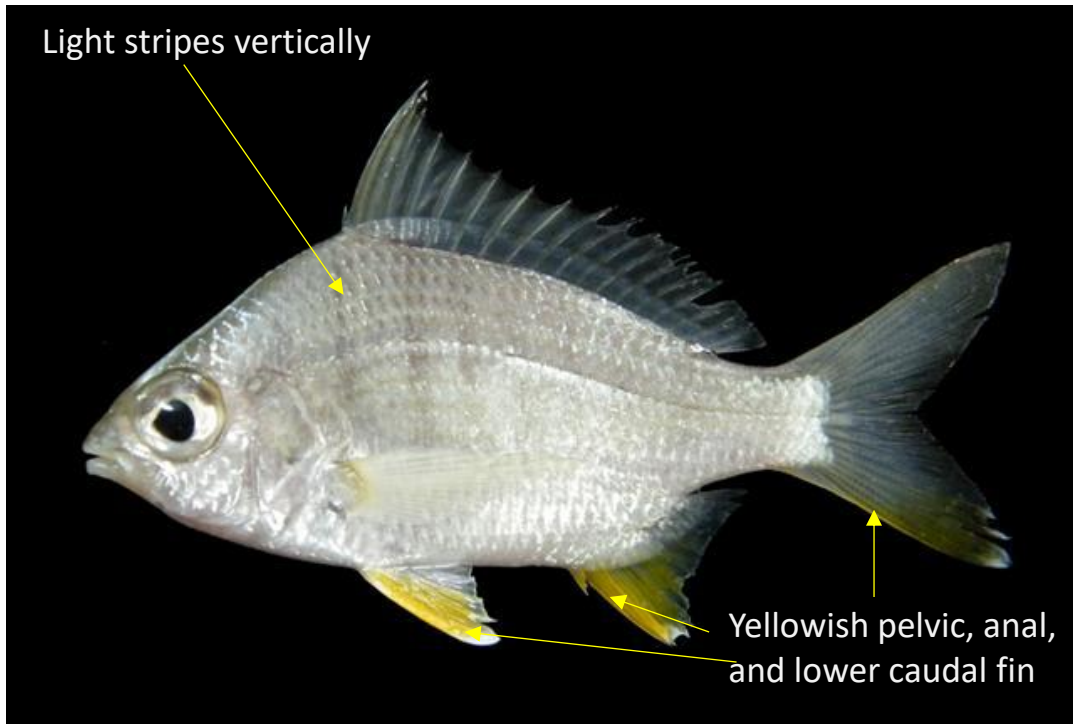
- *Pomydassys kaakan*

- Nemipteridae

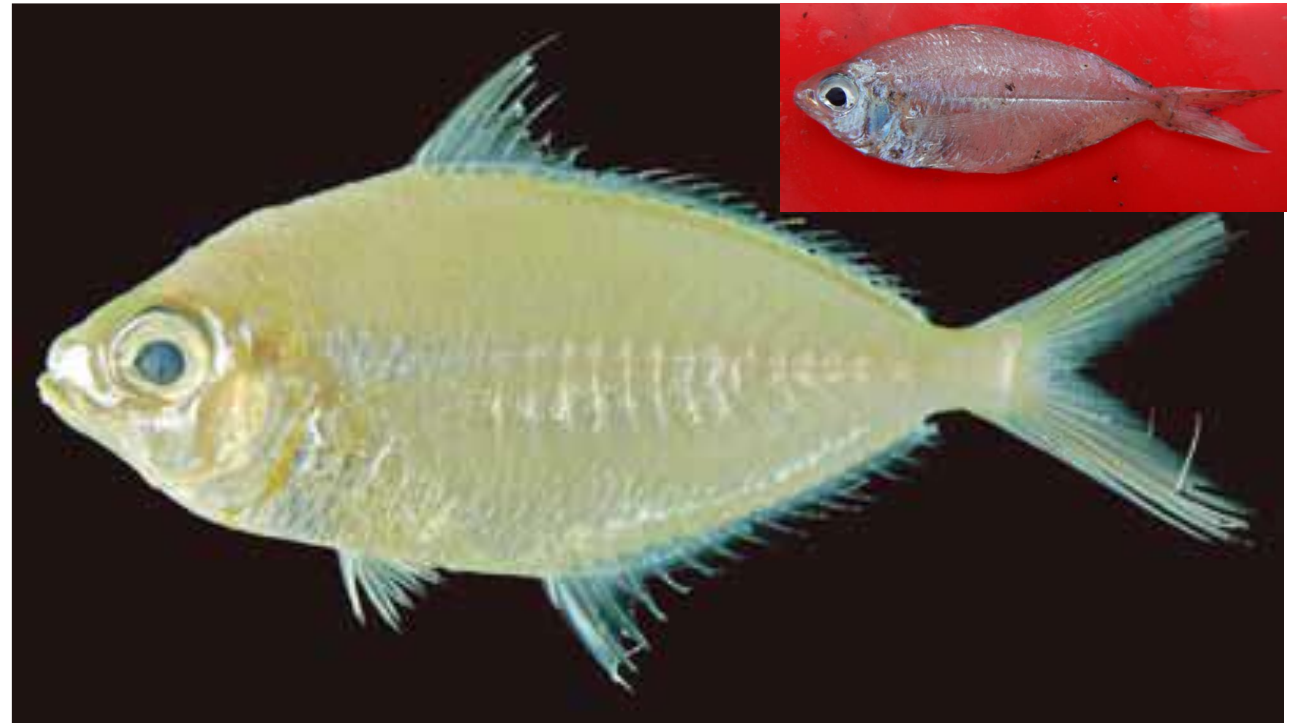
- *Nemipterus furcosus*
    - *Nemipterus hexodon*
    - *Nemipterus marginatus*
    - *Pentapodus setosus*
    - *Scolopsis monogramma*



## Gerridae



- ดอกหมีแดง ดอกหมีครีบสั้น
- Deepbody Silverbiddy
- *Gerres erythrourus*
  - large size, about a size of hand palm
  - no filamentous fin ray in dorsal fin



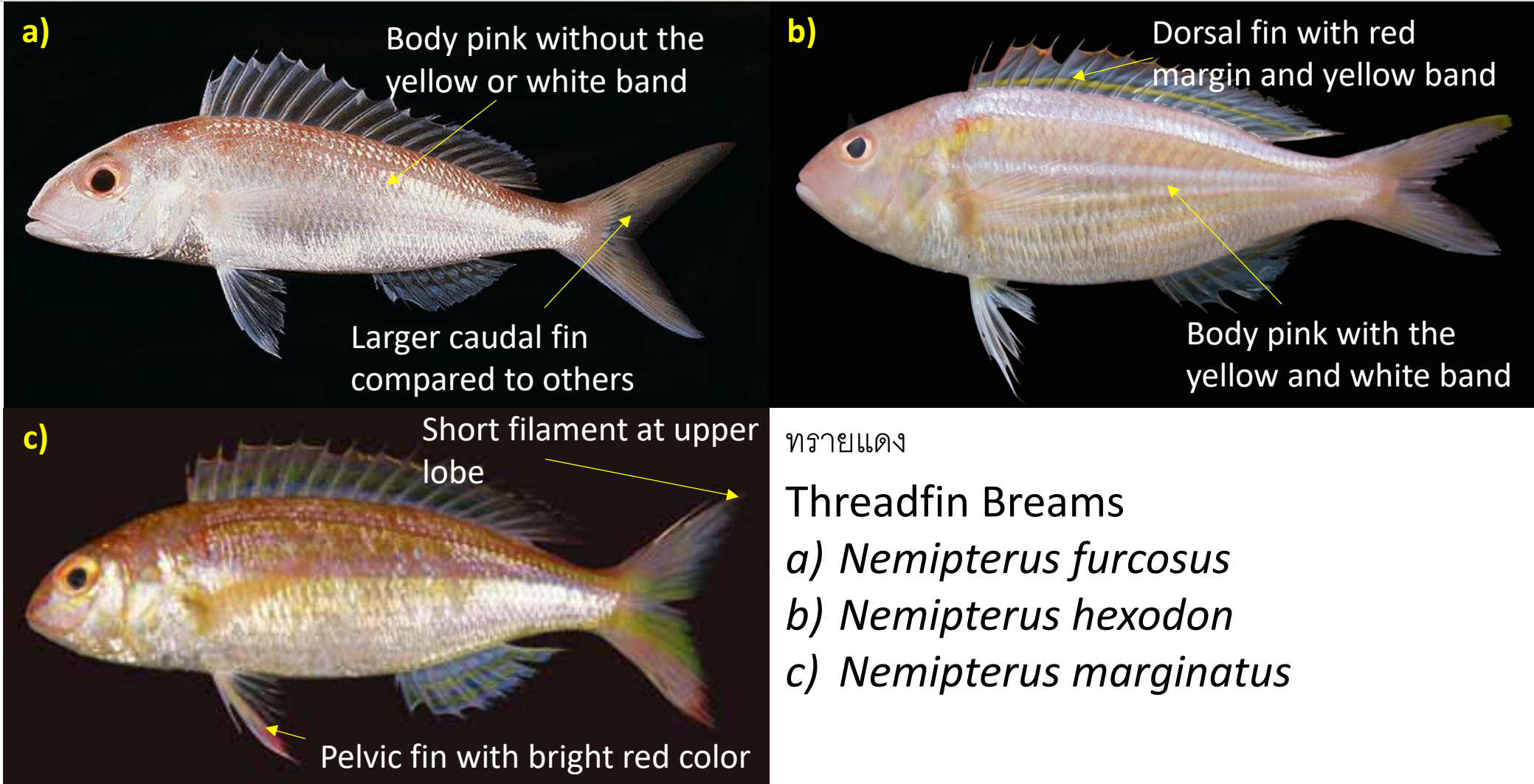
- เป็นแก้ว
- Longfin Silverbiddy
- *Pentaprion longimanus*
  - small size, often caught in a school
  - similar to Leiognathidae but with larger scale

## Hemulidae

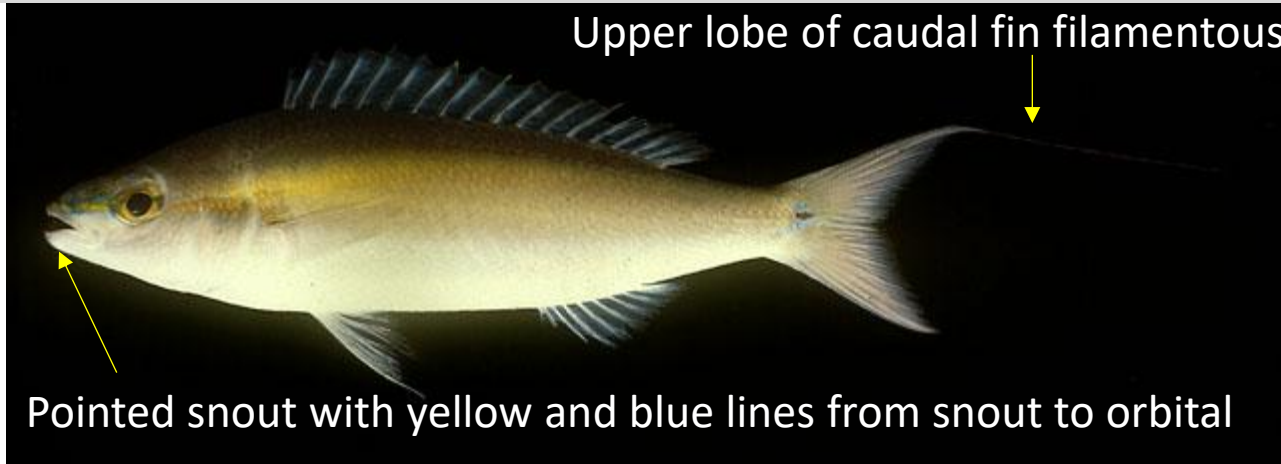


- กะพงแฉก
- Silver Grunt
- *Pomydasys kaakan*

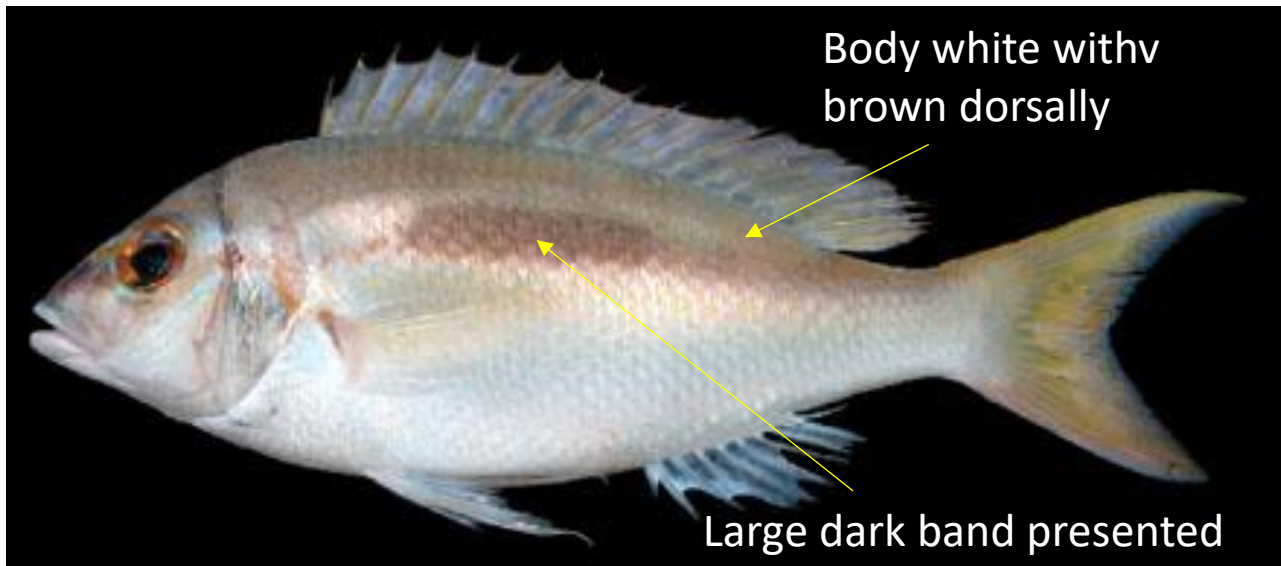
## Nemipteridae



## Nemipteridae



- สายรุ้ง
- Butterfly Whiptail
- *Pentapodus setosus*



- ทราบขาว
- Monogrammed Monocle Bream
- *Scolopsis monogramma*

# Major group of fish found

- Perciformes

- Mullidae

- *Upeneus sundaicus*

- *Upeneus tragula*

- Callionymidae

- *Dactylopus dactylopus*

- Siganidae

- *Siganus canaliculatus*

- *Siganus javus*

- Scombridae

- *Rastrelliger kanagurta*



## Mullidae



- แพะแดง
- Ochreband Goatfish, Sunda Goatfish
- *Upeneus sundaicus*



- แพะลาย
- Freckled Goatfish
- *Upeneus tragula*

## Callionymidae



- มังกรน้อย
- Fingered Dragonett
- *Dactylopus dactylopus*

- 4 distinct pelvic fin ray presented
- usable for walking at the sea floor
- red protectile snout

## Siganidae



- สลิดทะเลจุดขาว
- White-spotted Spinefoot
- *Siganus canaliculatus*

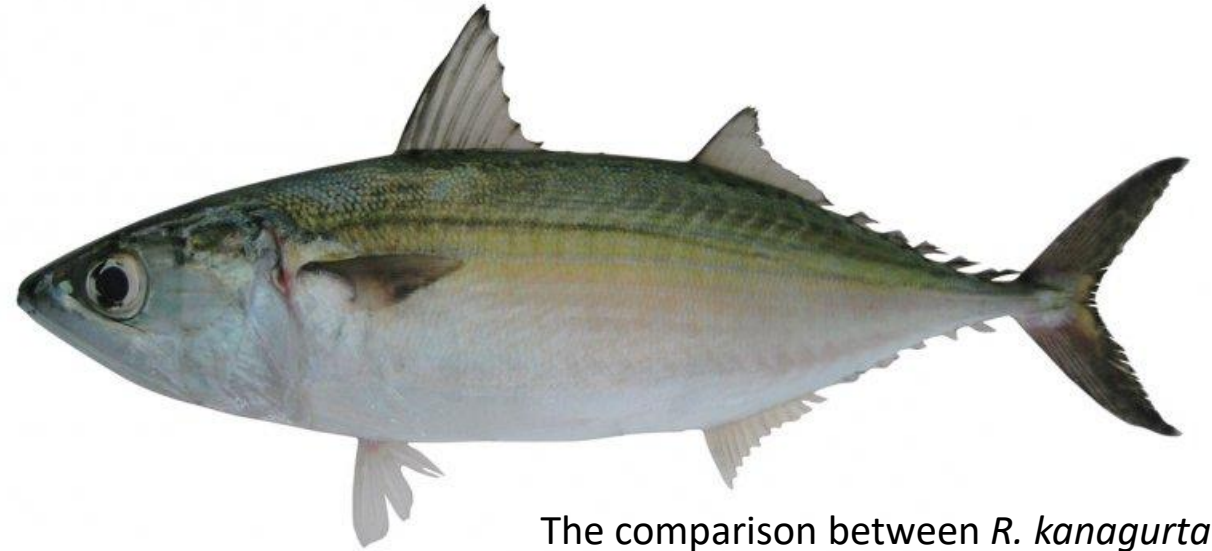


- สลิดทะเลแถบ
- Streaked Spinefoot
- *Siganus javus*

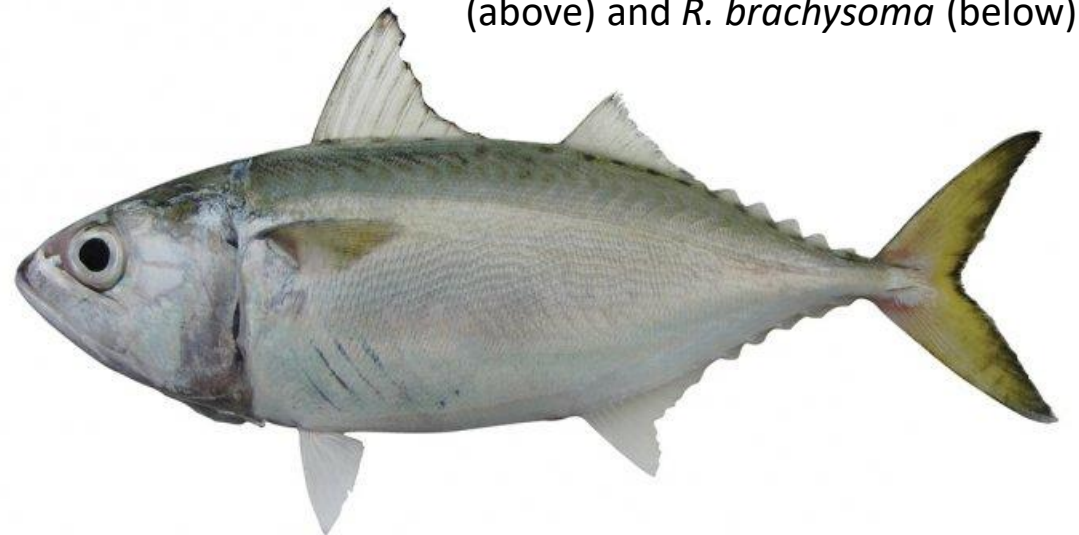
## Scombridae



- ปลาลัง
- Indian Mackerel
- *Rastrelliger kanagurta*



The comparison between *R. kanagurta* (above) and *R. brachysoma* (below)

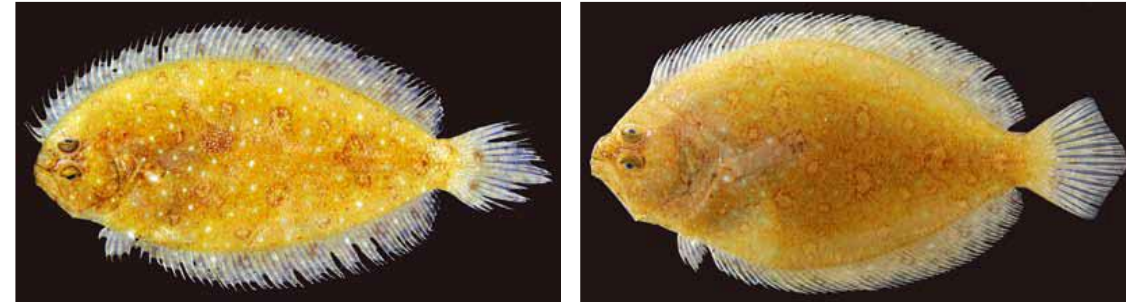


# Major group of fish found

- Pleuronectiformes

- Paralichthyidae

- *Pseudorhombus arsius*
    - *Pseudorhombus oligodon*



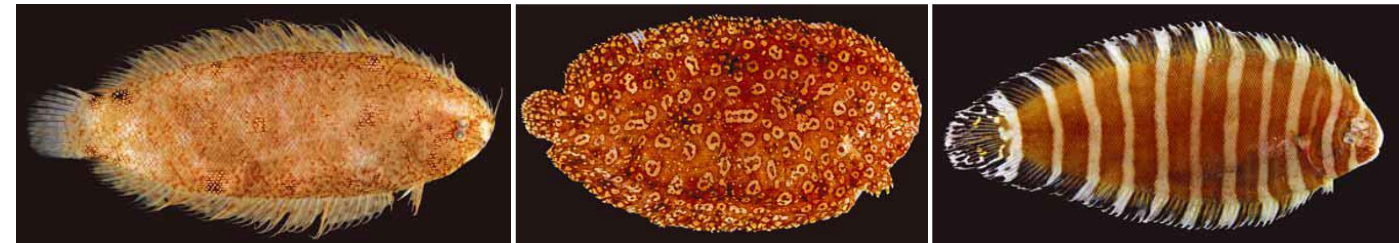
- Bothidae

- *Arnoglossus macrolophus*
    - *Engyprosopon* spp.
    - *Grammanobothus polyphthalmus*



- Soleidae

- *Aseragodes filiger*
    - *Pardachirus parvonicus*
    - *Zebrius quagga*



- Cynoglossidae

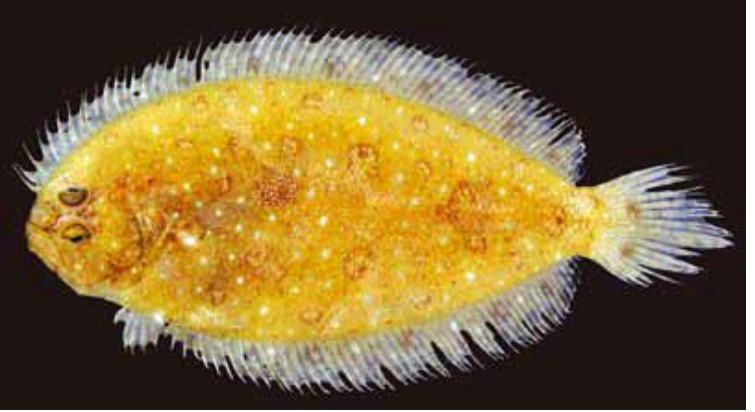
- *Cynoglossus arel*



## Paralichthyidae



- ลิ่นควาย
  - Largetooth Flounder
  - *Pseudorhombus arsius*
- body oval, compressed
  - left side of body yellowish or brown with small white spots and larger dark spots
  - snout short



- ลิ่นควาย
  - Roughscale Flounder
  - *Pseudorhombus oligodon*
- body oval, compressed
  - left side of body yellowish or brown with large white spots
  - snout longer compared to *P. arsius*

## Bothidae



- ซีกเดียว
- Largecrest-lefteye Flounder
- *Arnoglossus macrolophus*

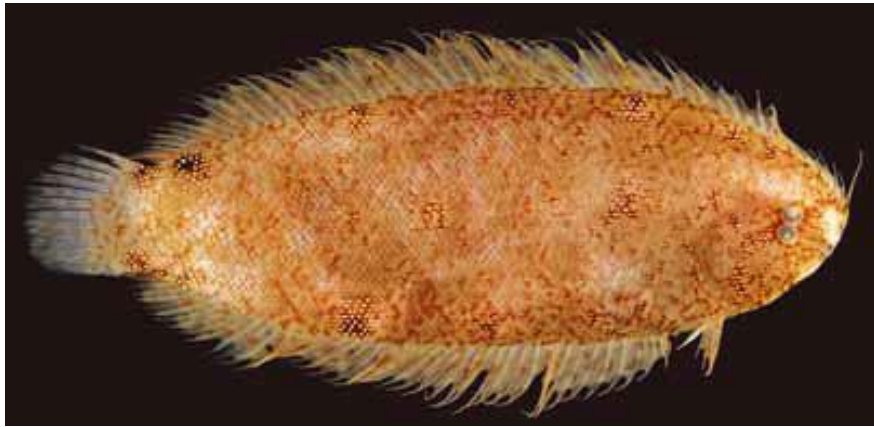


- ไบขนุน
- Largescale Flounder
- *Engyprosopon* spp.



- ลิ่นหมาหงอนสั้น
- Manyeye Flounder
- *Grammanobothus polythalmus*

## Soleidae



- ลิ้นควาย
- Sole
- *Aseragodes filiger*



- ลิ้นควายจุด
- Sole
- *Pardachirus parvonicus*



- ลิ้นหมาลาย
- Sole
- *Zebrius quagga*

- Tetraodontiformes

- Monacanthidae

- *Aleuterus monoceros*
    - *Anacanthus barbatus*



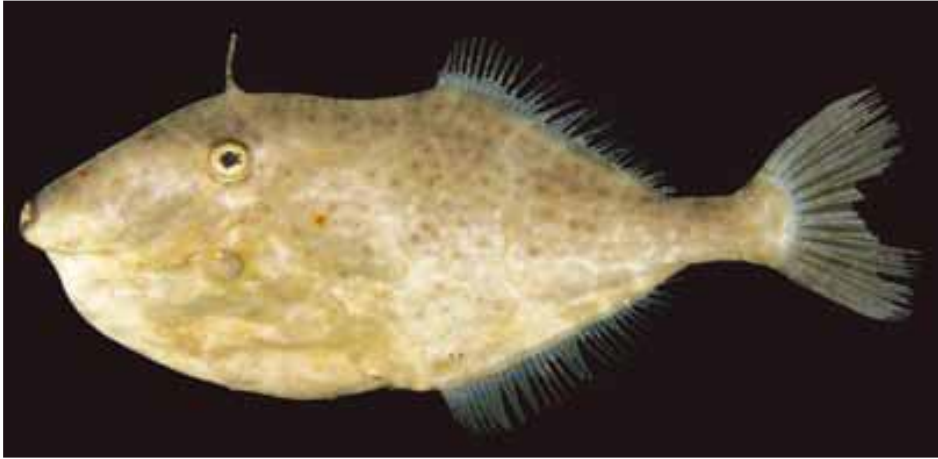
- Ostracidae

- Tetraodontidae

- *Lagocephalus lunaris*
    - *Lagocephalus seuzensis*



## Monacanthidae



- วัว
- Unicorn Leatherjacket
- *Aluterus monoceros*

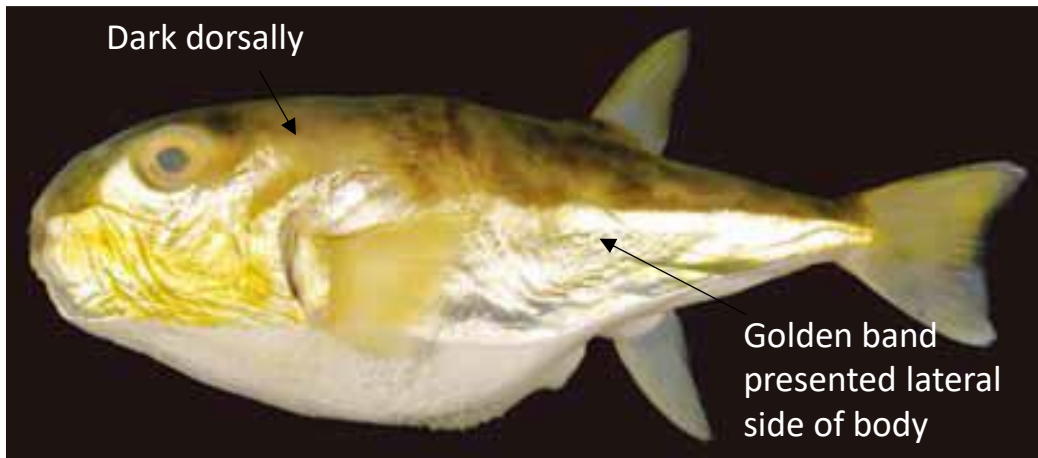


- วัวดาบ
- Bearded Leatherjacket
- *Anacanthus barbartus*

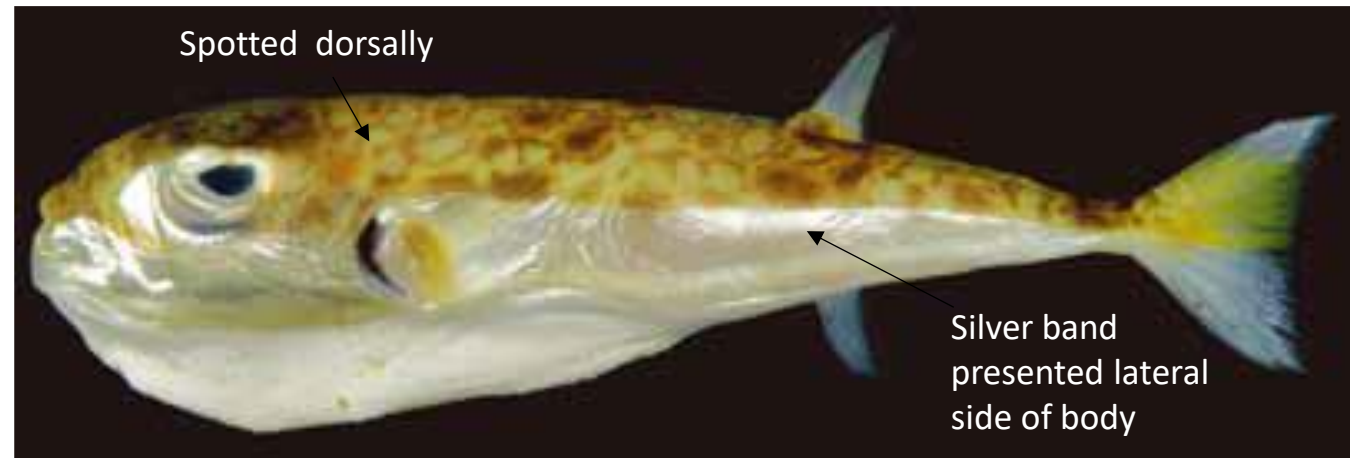
## Ostraciidae



## Tetraodontidae



- ปักเป้าเขียว ปักเป้าวงจันทร์
- Rough Golden Puffer
- *Lagocephalus lunaris*



- ปักเป้าหลังดำ
- Suez Puffer
- *Lagocephalus suezensis*

